

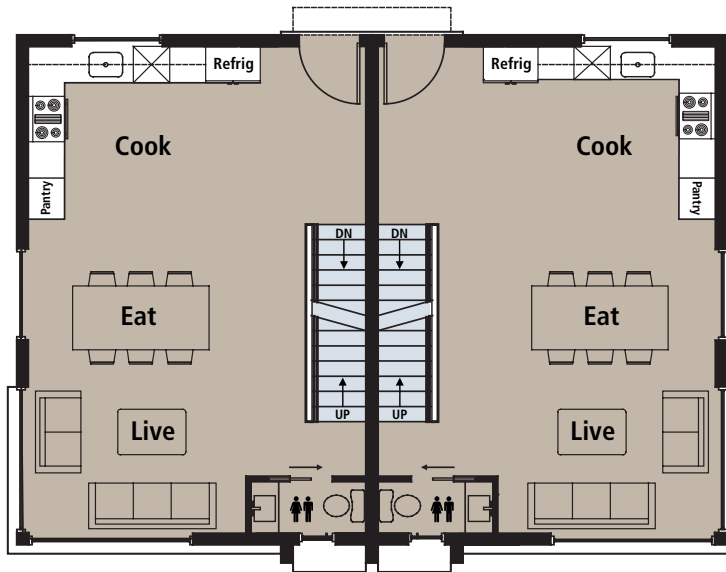


THE
NINES

14th Ave. West, Seattle, WA 98119

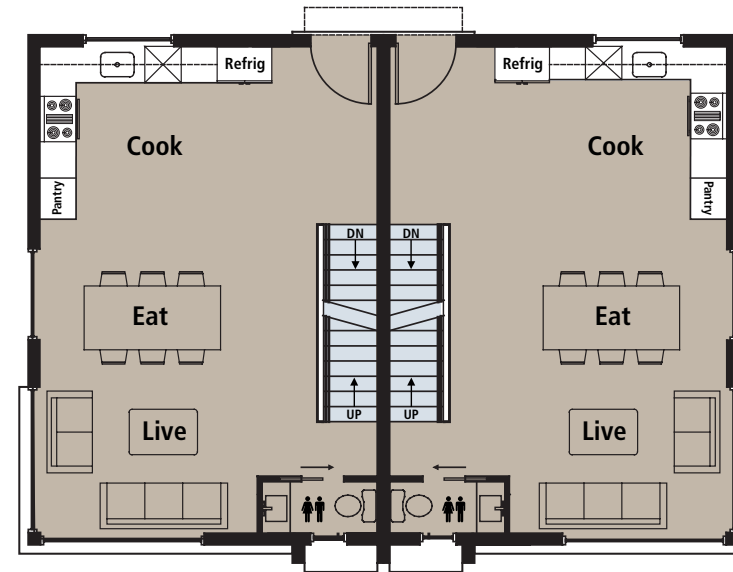
3 Bedrooms | 2.25 Bathrooms | 1,700-1,715 Approx Sq Ft | 1 Parking Stall

Floor Two



66 - F

66 - G

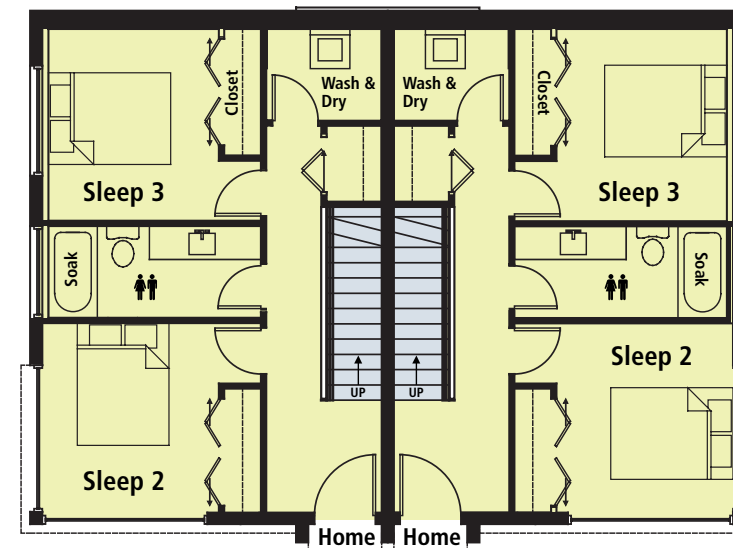
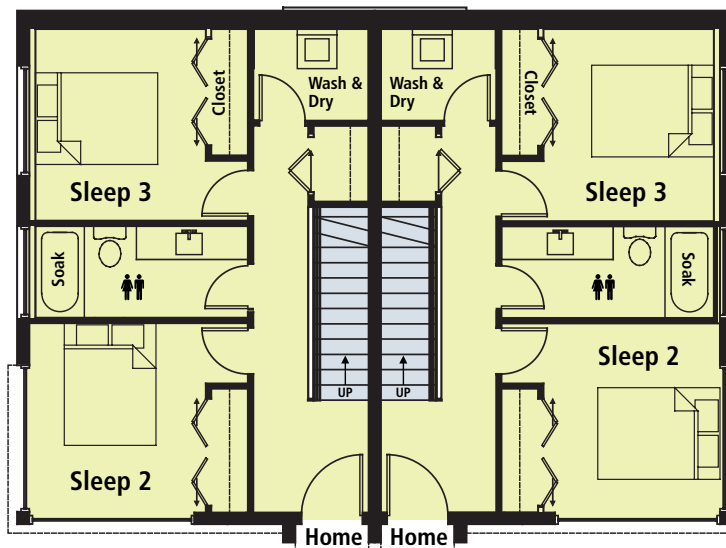


66 - H

66 - I

Floor One

- Carpet
- Concrete
- Hardwood



Disclaimer: Floor plans are for illustrative purposes only. In a continuing effort to improve products and designs, final construction elevations, floor plans and/or materials and colors may vary. Buyer to verify to their own satisfaction.

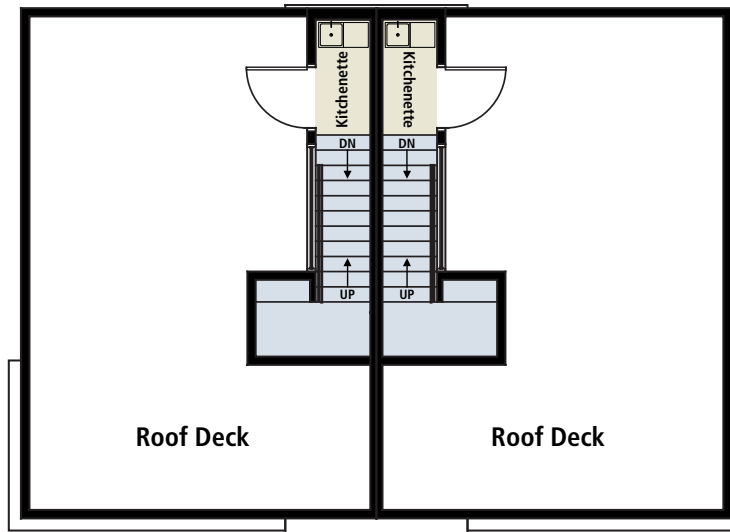


THE NINES

14th Ave. West, Seattle, WA 98119

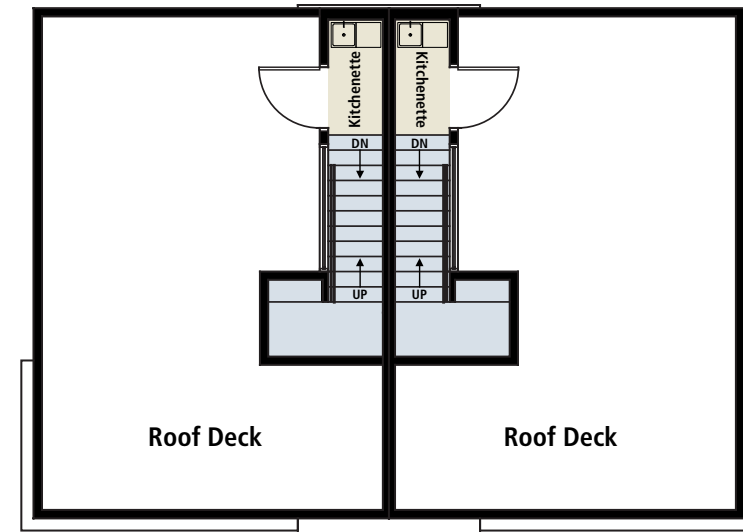
3 Bedrooms | 2.25 Bathrooms | 1,700-1,715 Approx Sq Ft | 1 Parking Stall

Floor Four



66 - F

66 - G

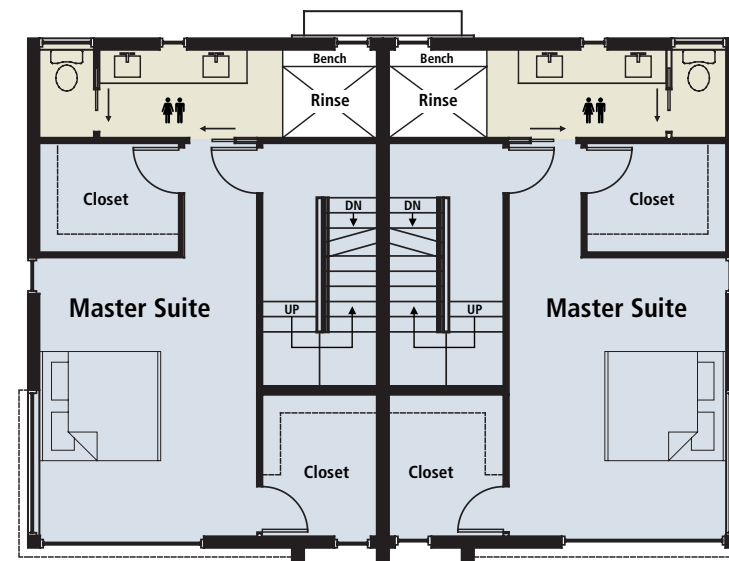
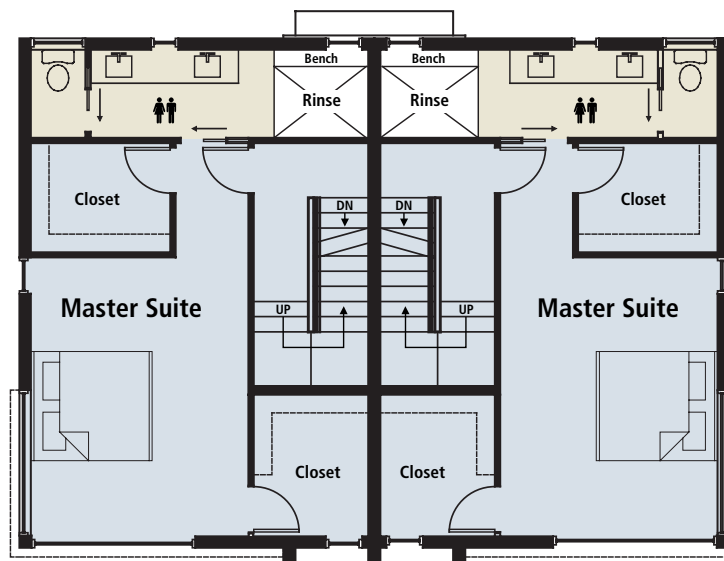


66 - H

66 - I

Floor Three

Carpet
Tile



Disclaimer: Floor plans are for illustrative purposes only. In a continuing effort to improve products and designs, final construction elevations, floor plans and/or materials and colors may vary. Buyer to verify to their own satisfaction.