

# ALTO

## TOWNHOMES

# 303B



3



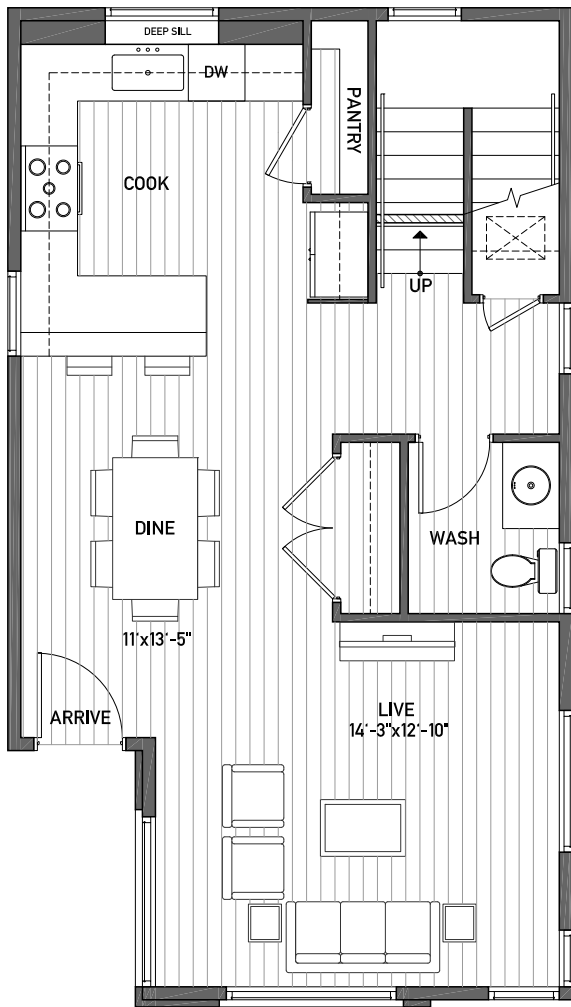
2.25



1 SPACE

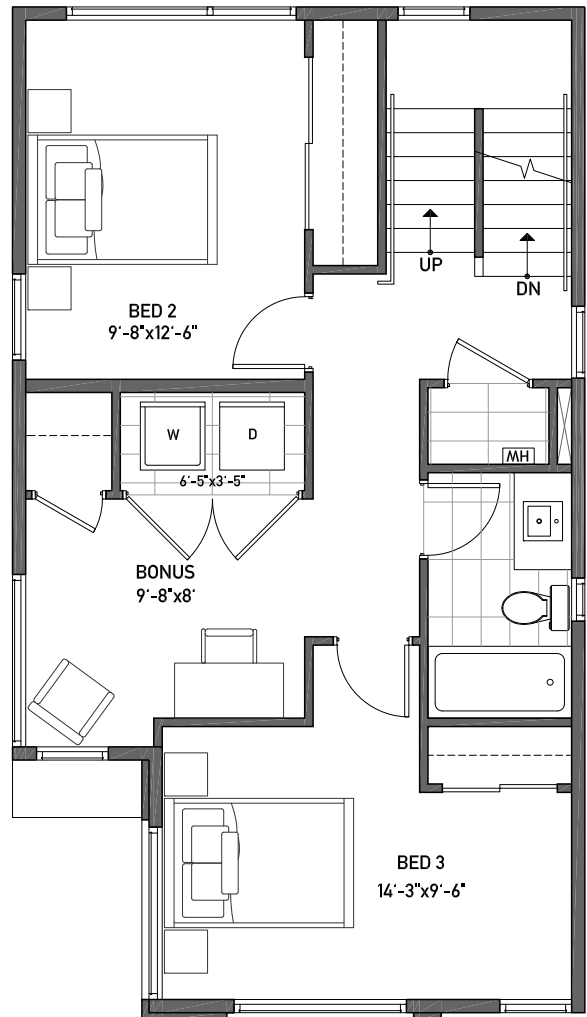
1,914 APPROX. SQ. FT  
 BUILDING DIMENSIONS: 19'11"W x 35'L

CEILING: 9'



FIRST FLOOR

CEILING: 8'



SECOND FLOOR

NORTH ←

# ALTO

## TOWNHOMES

# 303B



3



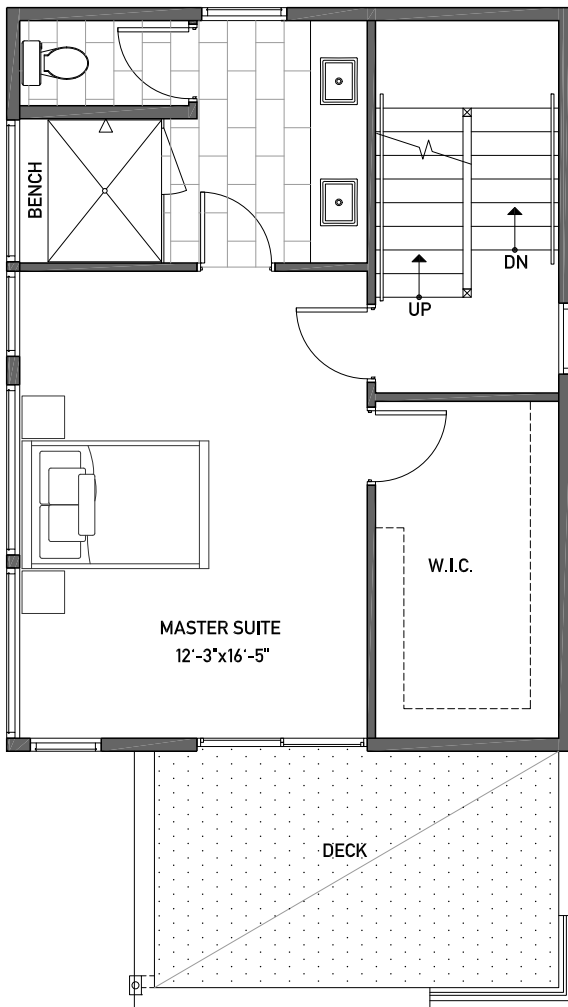
2.25



1 SPACE

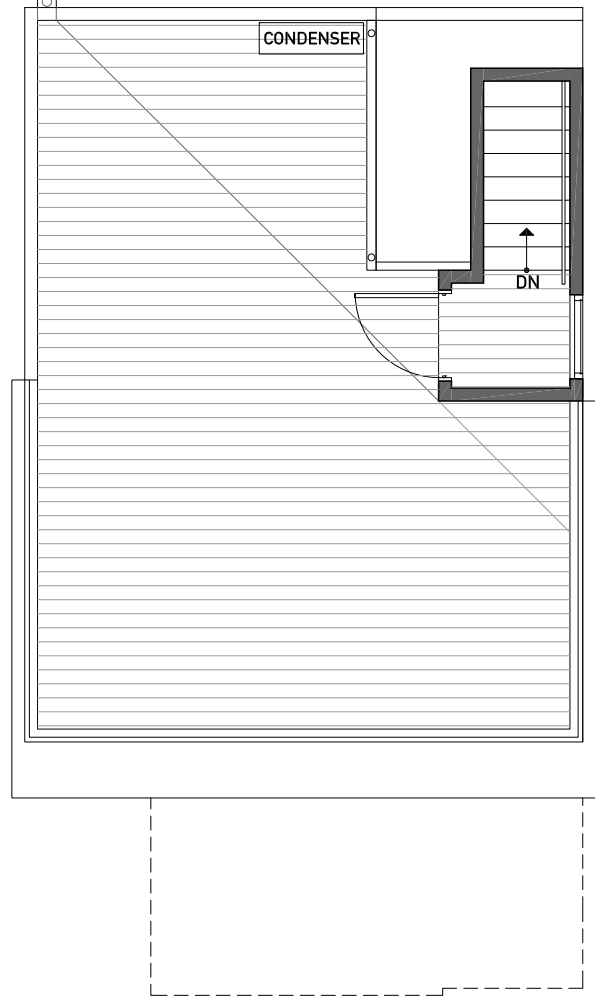
1,914 APPROX. SQ. FT  
 BUILDING DIMENSIONS: 19'11"W x 35'L

CEILING: 8'6"



THIRD FLOOR

CEILING: 7'6"



FOURTH FLOOR

NORTH ←