

ALTO

TOWNHOMES

303E



3



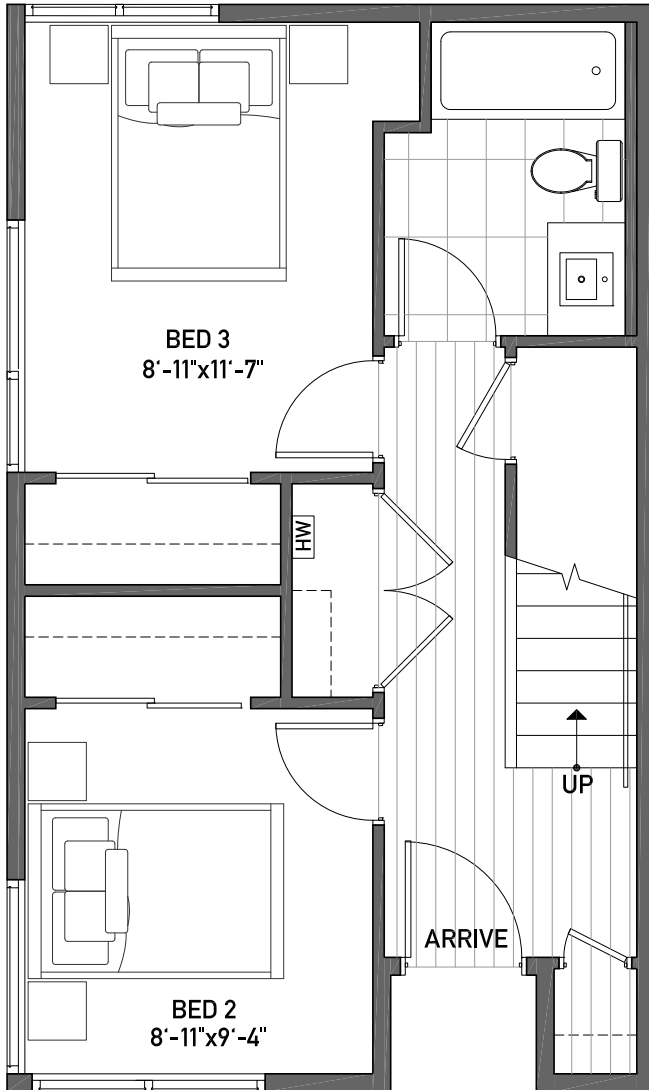
1.75



1 SPACE

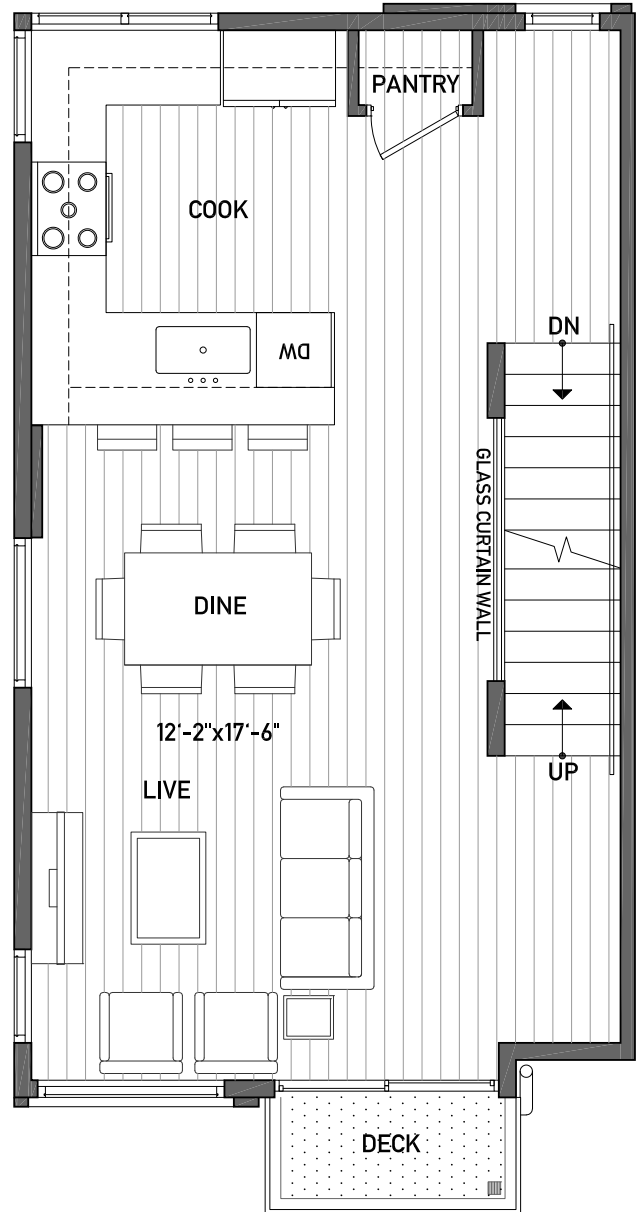
1,520 APPROX. SQ. FT
 BUILDING DIMENSIONS: 16'7"W x 28'L

CEILING: 8'



FIRST FLOOR

CEILING: 9'



SECOND FLOOR

NORTH →



ALTO

TOWNHOMES

303E



3

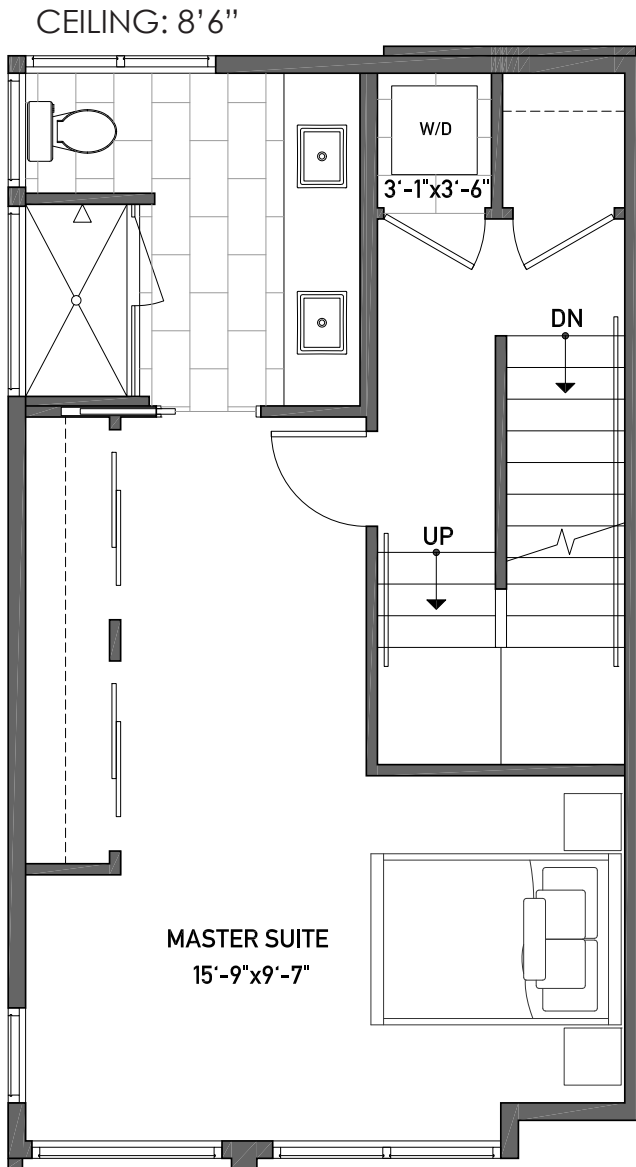


1.75

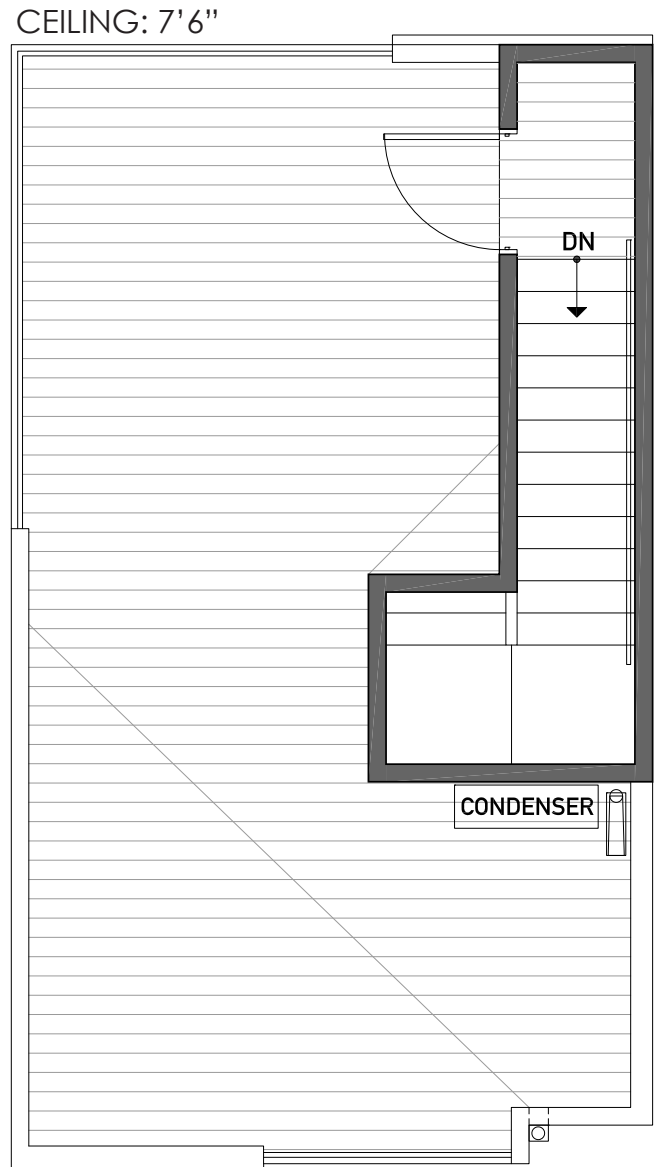


1 SPACE

1,520 APPROX. SQ. FT
 BUILDING DIMENSIONS: 16'7"W x 28'L



THIRD FLOOR



FOURTH FLOOR

NORTH →

