



304B+D



3



1.75

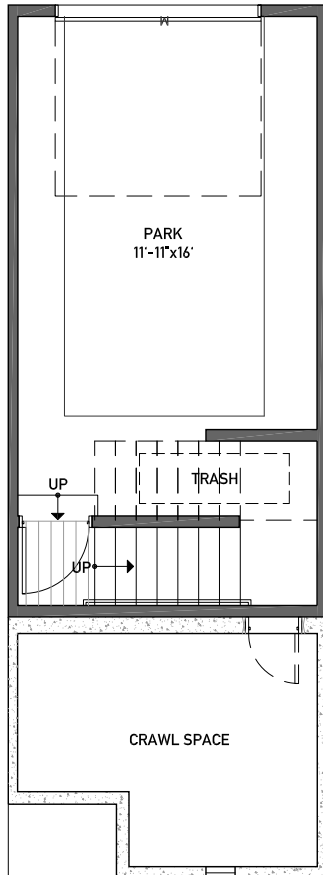


GARAGE

1,552 APPROX. SQ. FT

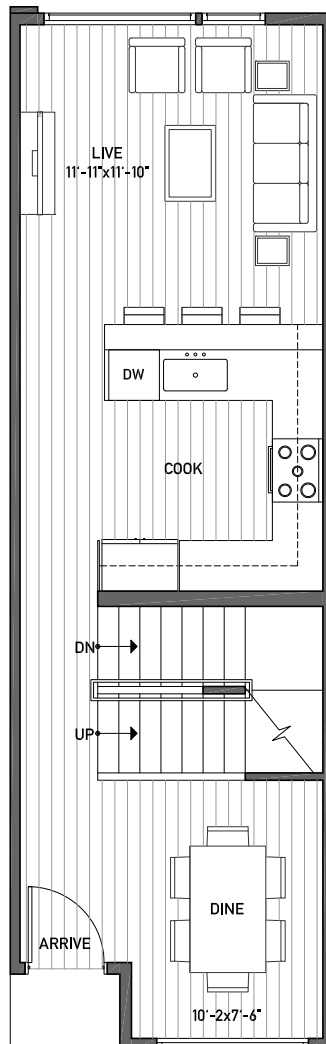
BUILDING DIMENSIONS: 12'9"W x 41'L

CEILING: 8'



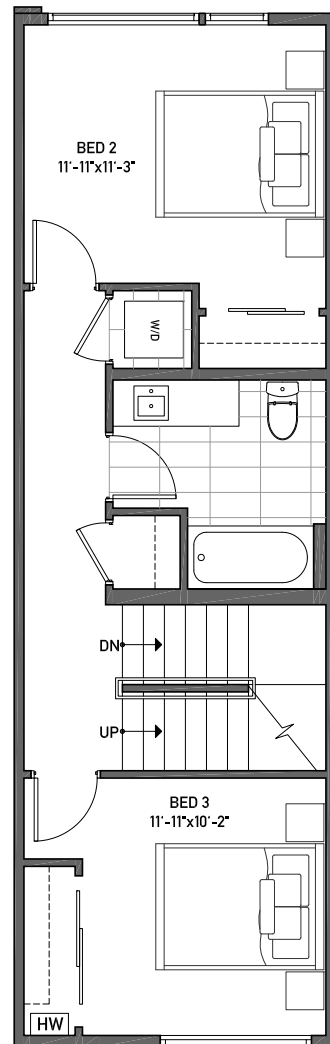
BASEMENT

CEILING: 9'



FIRST FLOOR

CEILING: 8'



SECOND FLOOR

NORTH →



304B+D



3



1.75

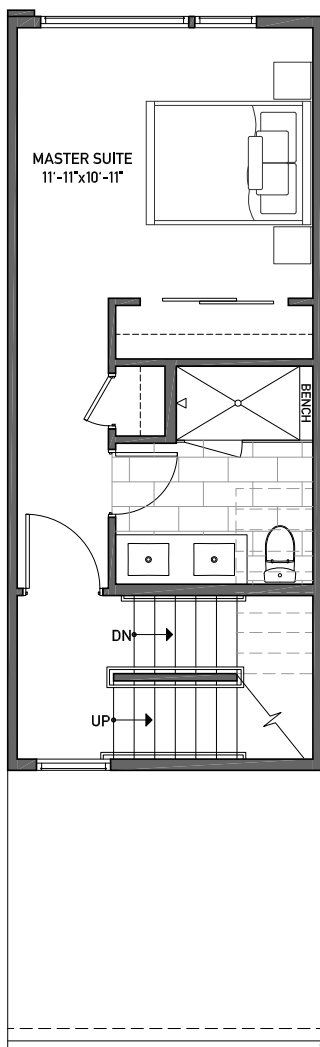


GARAGE

1,552 APPROX. SQ. FT

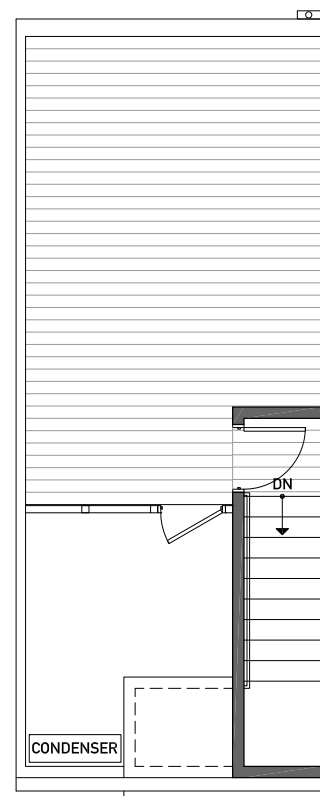
BUILDING DIMENSIONS: 12'9"W x 41'L

CEILING: 8'



THIRD FLOOR

CEILING: 8'6"



ROOF

NORTH →