



305B-E



3



1.75

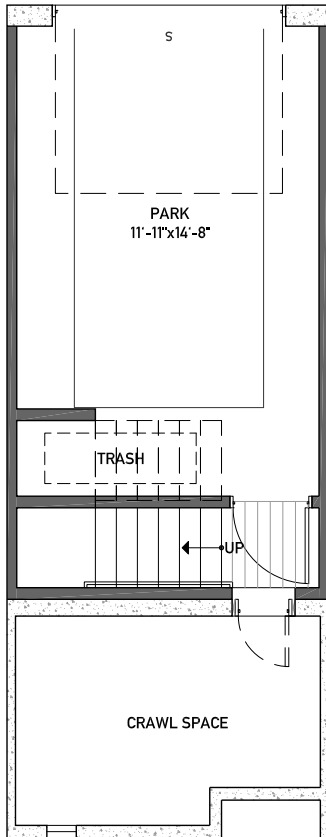


GARAGE

1,588 APPROX. SQ. FT

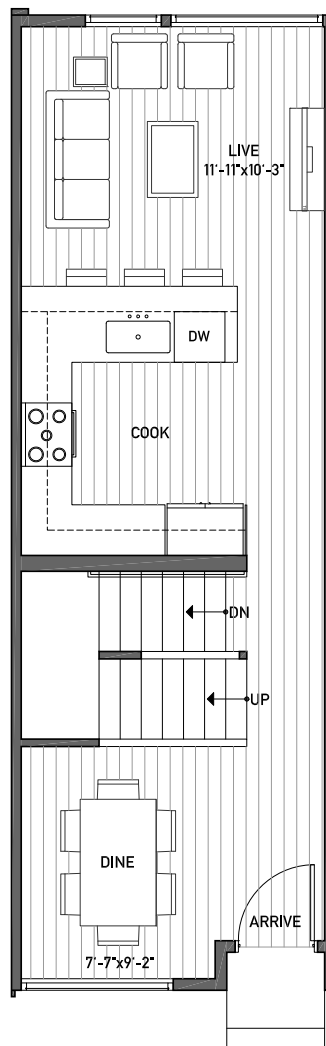
BUILDING DIMENSIONS: 12'9"W x 38'6"L

CEILING: 8'



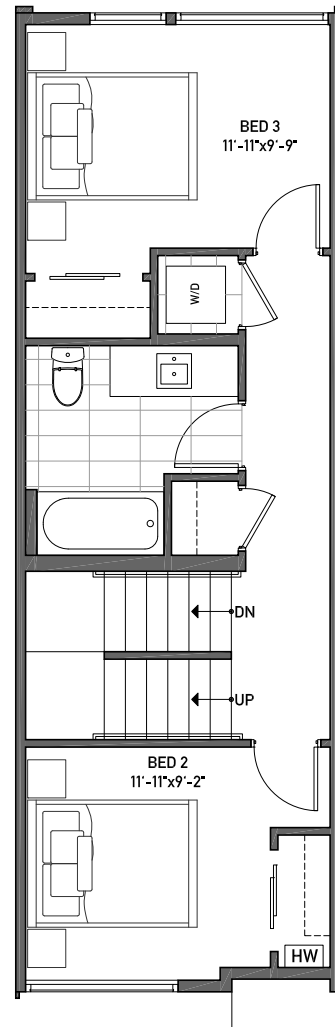
BASEMENT

CEILING: 9'



FIRST FLOOR

CEILING: 8'



SECOND FLOOR

NORTH →



305B-E



3



1.75

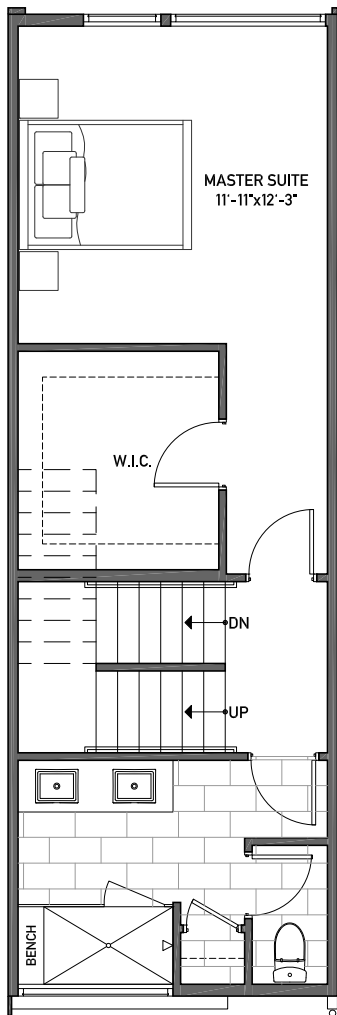


GARAGE

1,588 APPROX. SQ. FT

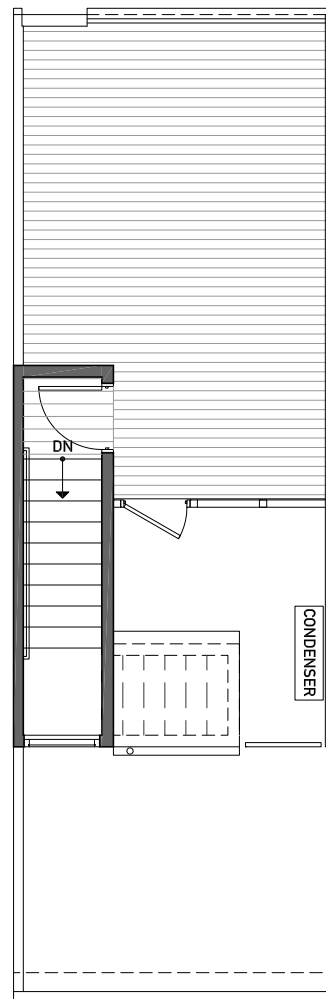
BUILDING DIMENSIONS: 12'9"W x 38'6"L

CEILING: 8'



THIRD FLOOR

CEILING: 8'6"



ROOF

NORTH →

WWW.ISOLAHOMES.COM | 206.792.3988 | 1521 1ST AVE S SUITE 102, SEATTLE, WA 98134

Disclaimer: Floor plans and site plans are for illustrative purposes only. In a continuing effort to improve products and designs, final construction elevations, square footages, floor plans and/or materials and colors may vary. Buyer to verify to their own satisfaction.

