



# 305G



3



1.75

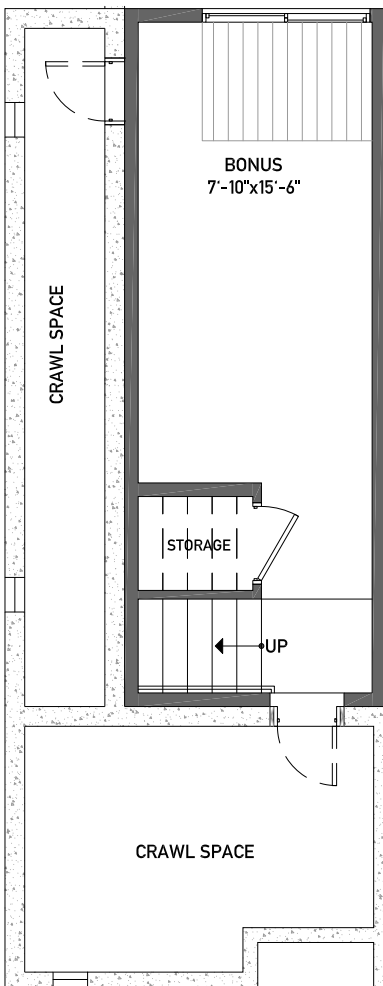


1 SPACE

1,768 APPROX. SQ. FT

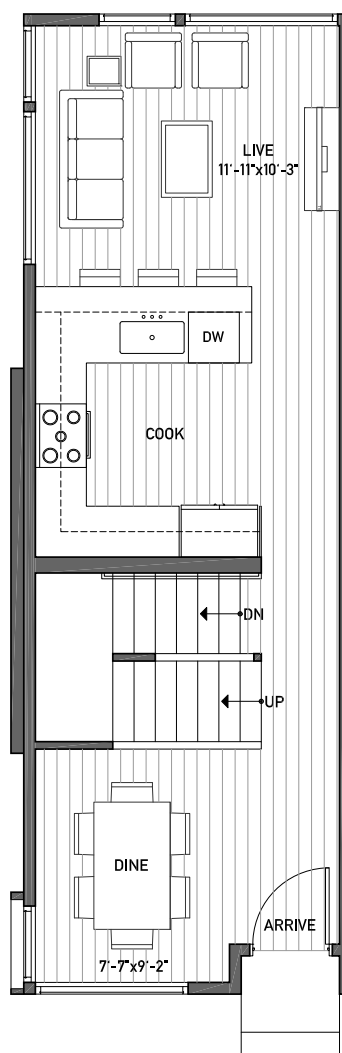
BUILDING DIMENSIONS: 12'9"W x 38'6"L

CEILING: 8'



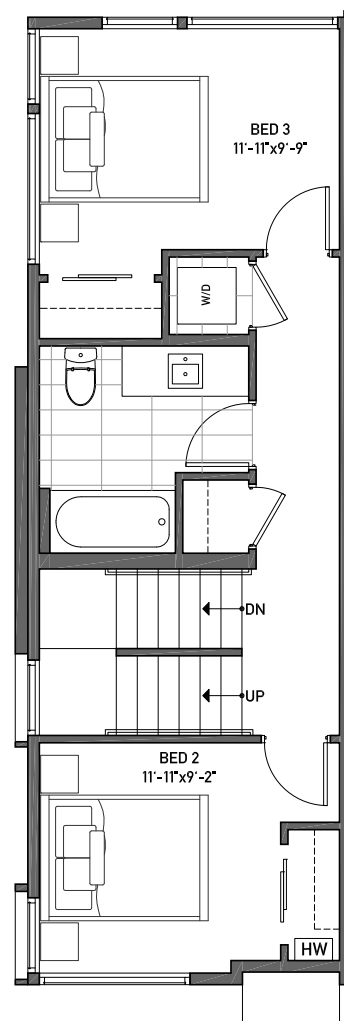
BASEMENT

CEILING: 9'



FIRST FLOOR

CEILING: 8'



SECOND FLOOR

NORTH →





# 305G



3



1.75

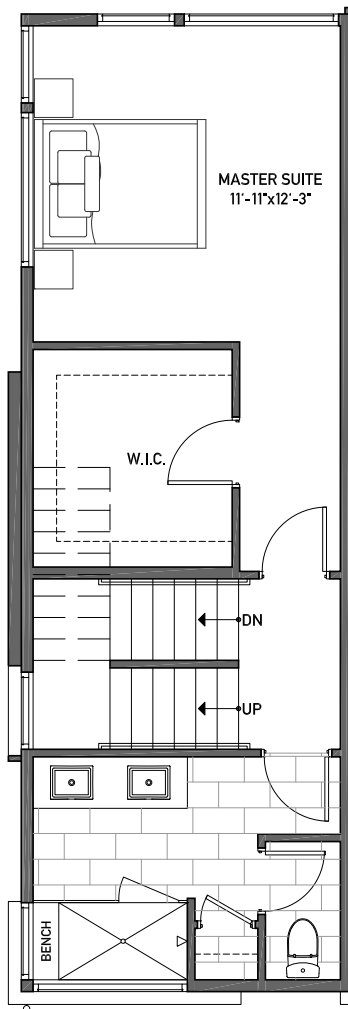


1 SPACE

1,768 APPROX. SQ. FT

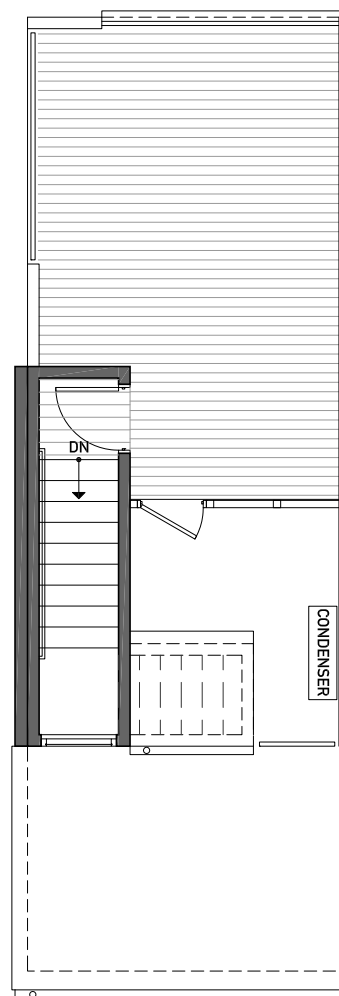
BUILDING DIMENSIONS: 12'9"W x 38'6"L

CEILING: 8'



THIRD FLOOR

CEILING: 8'6"



ROOF

NORTH →

