



# 3527 WALLINGFORD AVE N

SITE PLAN ID: 313B



1,392



2

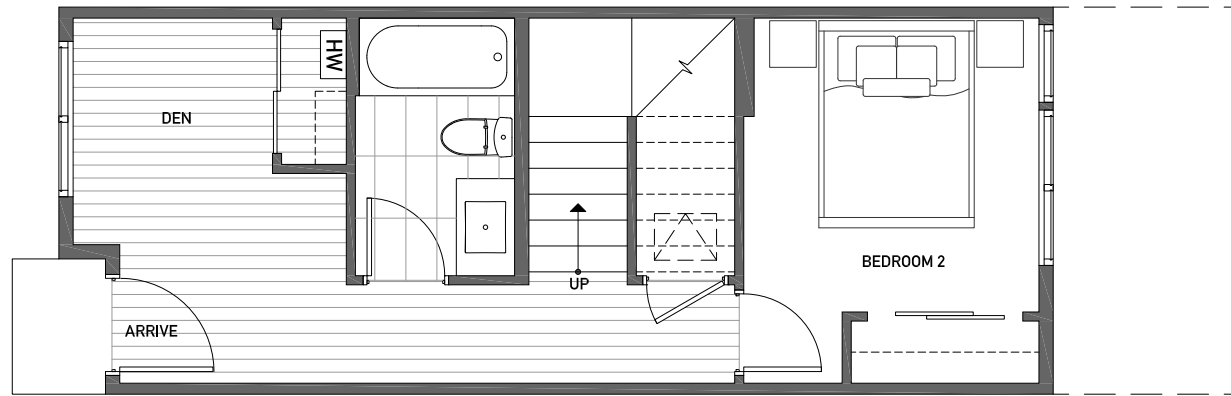


1.75

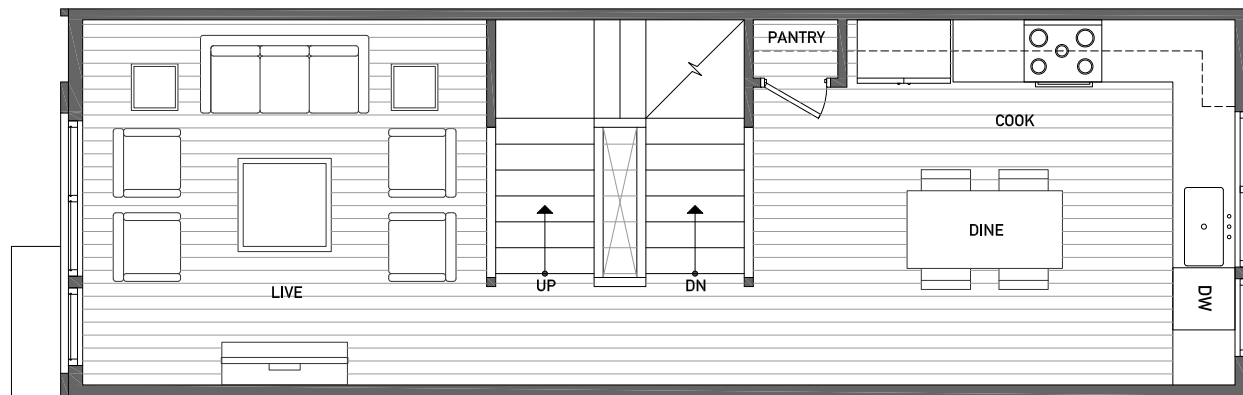


PARKING SPACE

FIRST FLOOR



SECOND FLOOR





# 3527 WALLINGFORD AVE N

SITE PLAN ID: 313B



1,392



2

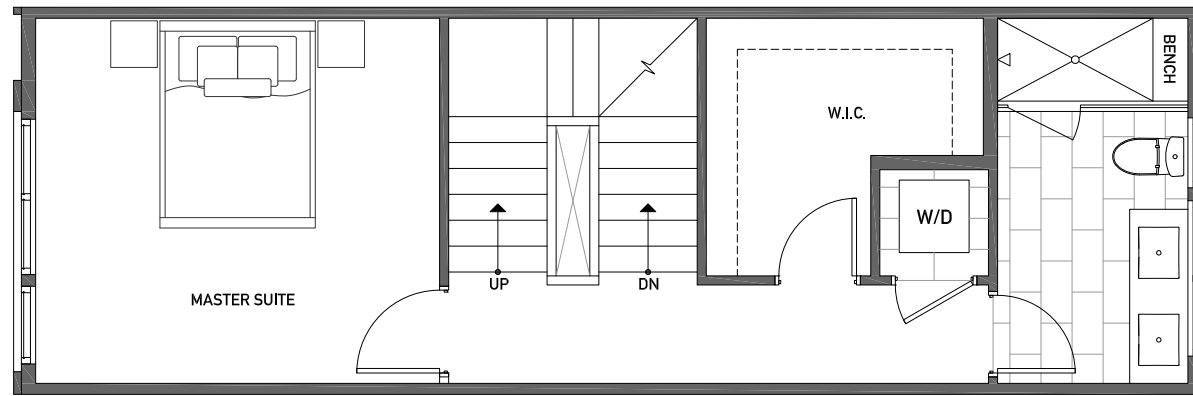


1.75



PARKING SPACE

THIRD FLOOR



NORTH  
↑

ROOF DECK

