



# 3529 WALLINGFORD AVE N

SITE PLAN ID: 313A



1,400



2

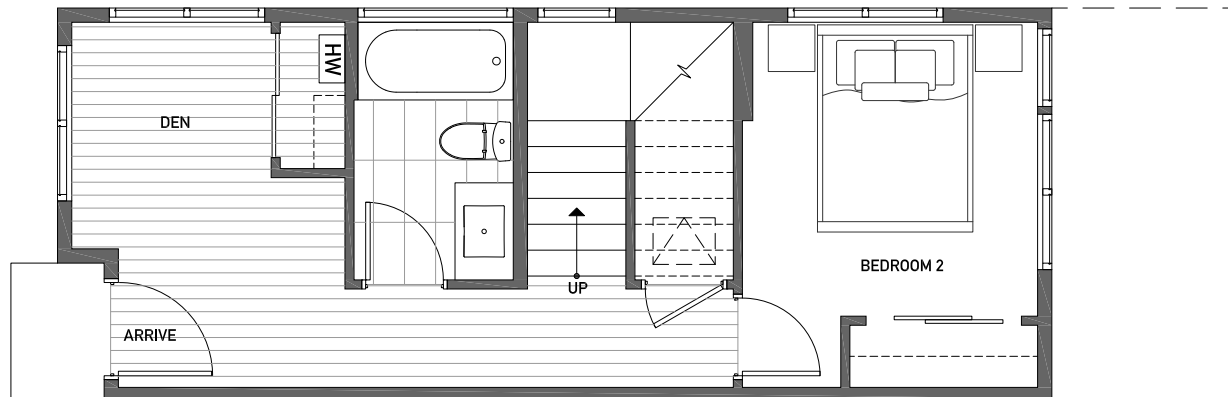


1.75

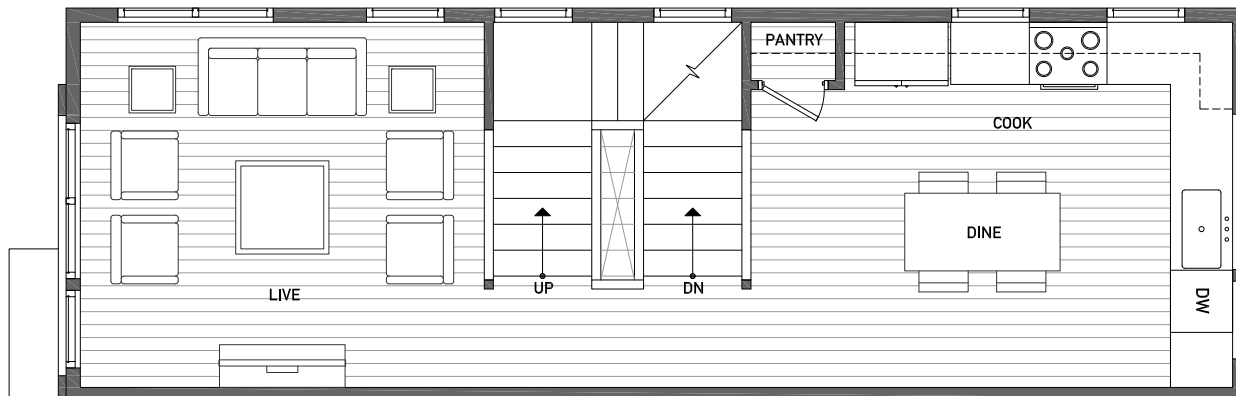


PARKING SPACE

FIRST FLOOR



SECOND FLOOR





# 3529 WALLINGFORD AVE N

SITE PLAN ID: 313A



1,400



2

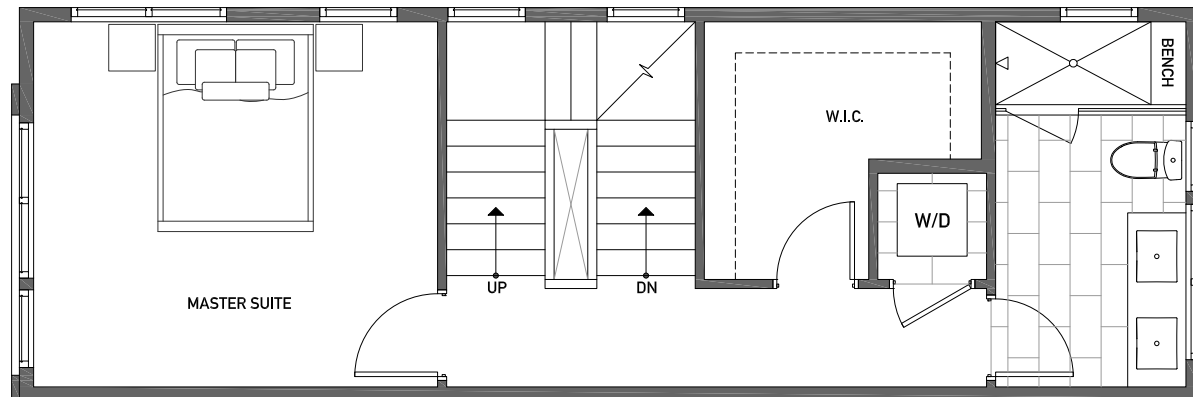


1.75



PARKING SPACE

THIRD FLOOR



ROOF DECK

