



# 7213 5TH AVE NE

SEATTLE, WA 98115



1,310



2

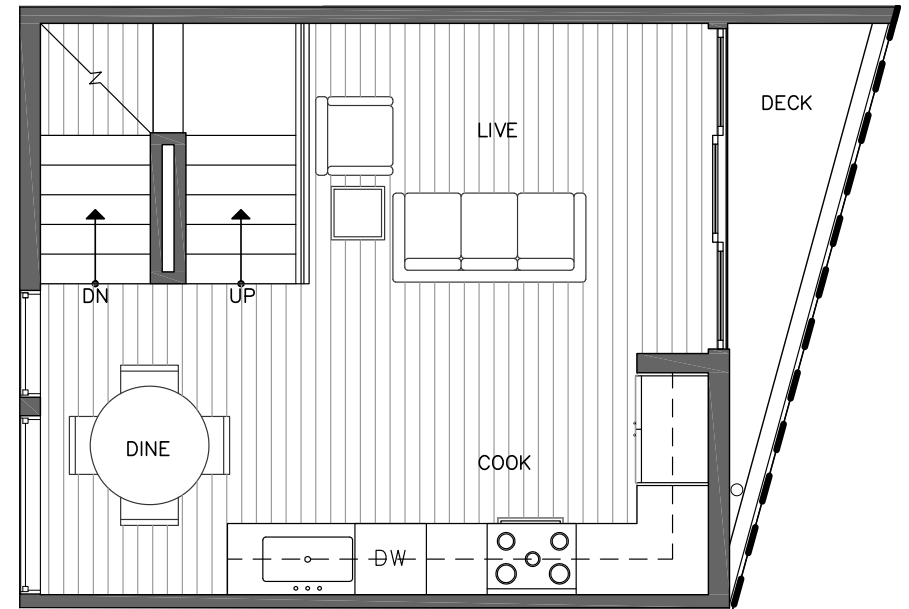
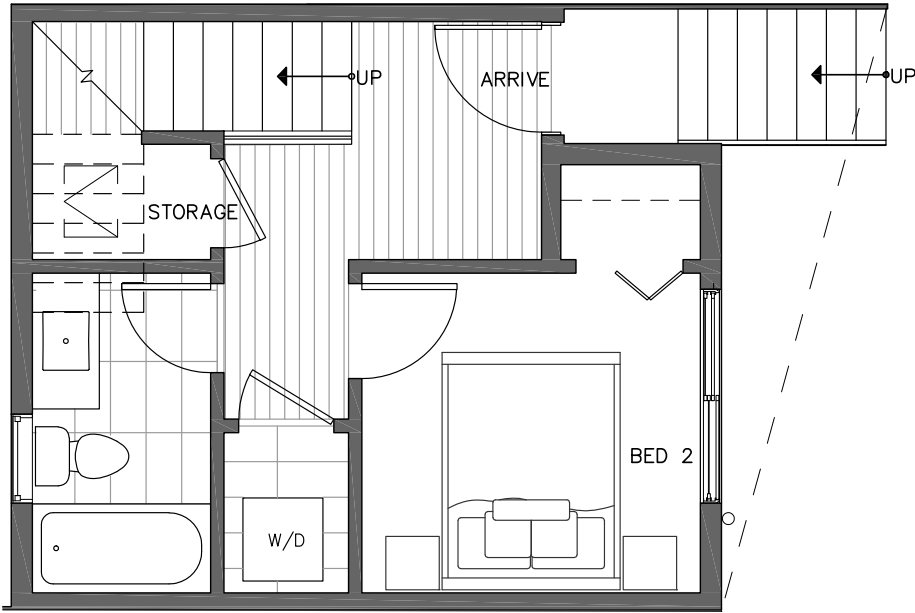


1.75



GARAGE

OF  
■ THE GREEN LAKE ■  
*Collection*



FIRST FLOOR

SECOND FLOOR

PID:026

ISOLAHOMES.COM | 206.413.9555 | 13555 SE 36TH ST., SUITE 320, BELLEVUE, WA 98006

Disclaimer: Floor plans and site plans are for illustrative purposes only. In a continuing effort to improve products and designs, final construction elevations, square footages, floor plans and/or materials and colors may vary. Buyer to verify to their own satisfaction.





# 7213 5TH AVE NE

SEATTLE, WA 98115



1,310



2

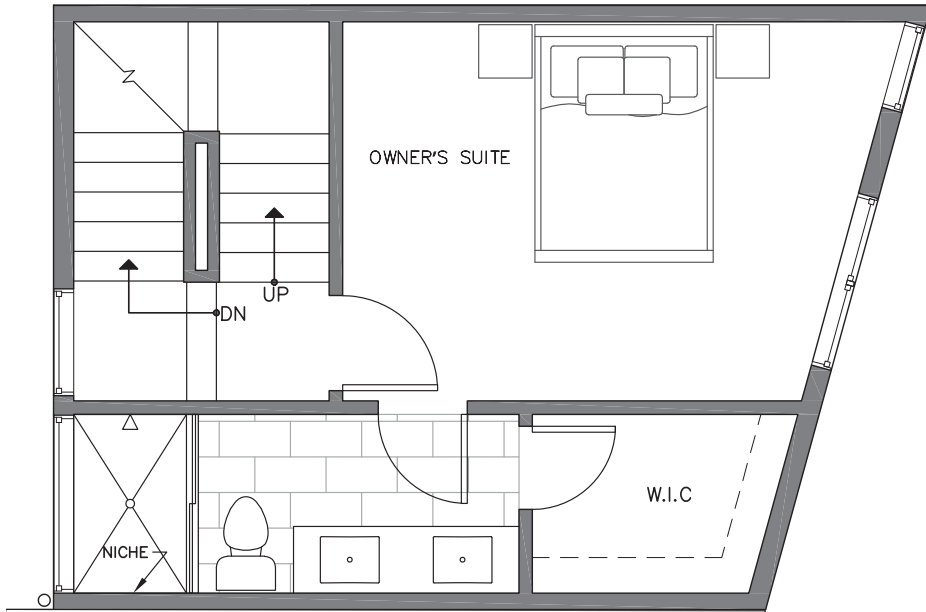


1.75

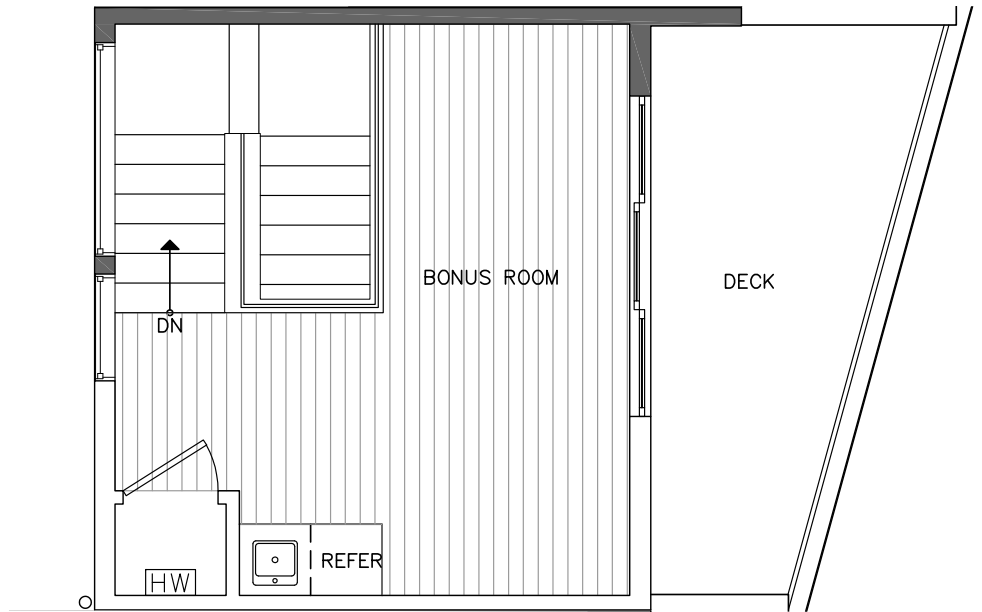


GARAGE

OF  
■ THE GREEN LAKE ■  
*Collection*



THIRD FLOOR



FOURTH FLOOR



PID:026

ISOLAHOMES.COM | 206.413.9555 | 13555 SE 36TH ST., SUITE 320, BELLEVUE, WA 98006

Disclaimer: Floor plans and site plans are for illustrative purposes only. In a continuing effort to improve products and designs, final construction elevations, square footages, floor plans and/or materials and colors may vary. Buyer to verify to their own satisfaction.

