



7217 5TH AVE NE

SEATTLE, WA 98115



1,245



2

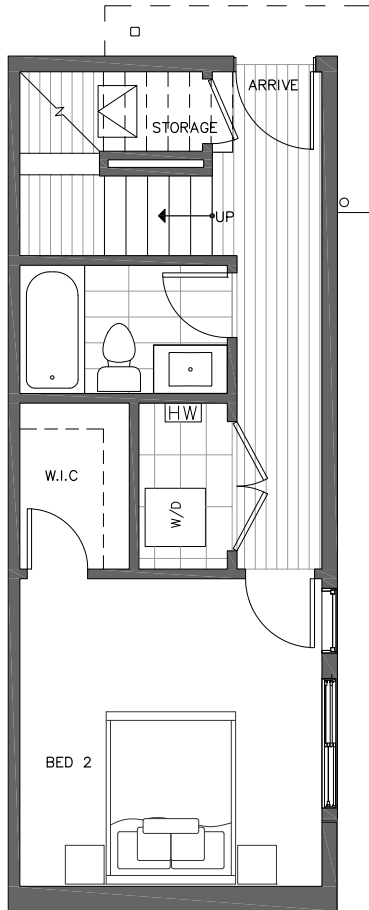


1.75

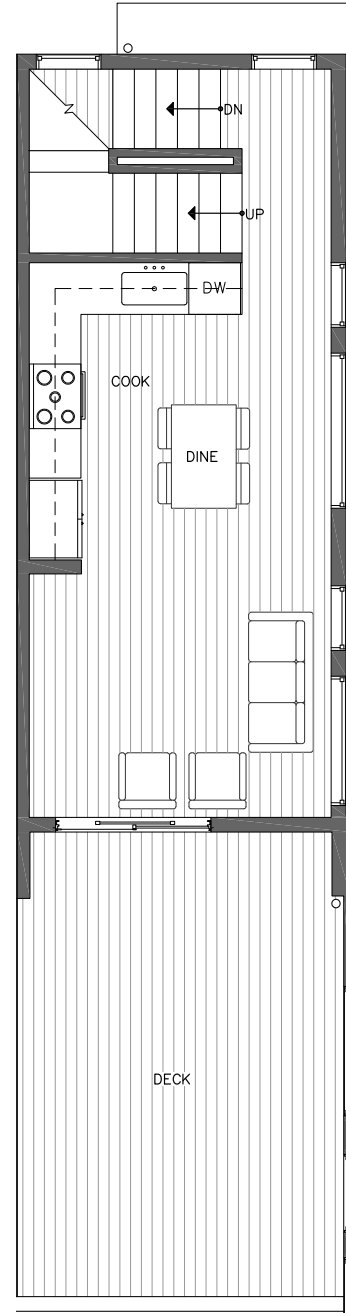


GARAGE

OF
THE GREEN LAKE
Collection



FIRST FLOOR



SECOND FLOOR

PID:026

ISOLAHOMES.COM | 206.413.9555 | 13555 SE 36TH ST., SUITE 320, BELLEVUE, WA 98006

Disclaimer: Floor plans and site plans are for illustrative purposes only. In a continuing effort to improve products and designs, final construction elevations, square footages, floor plans and/or materials and colors may vary. Buyer to verify to their own satisfaction.





7217 5TH AVE NE

SEATTLE, WA 98115



1,245



2

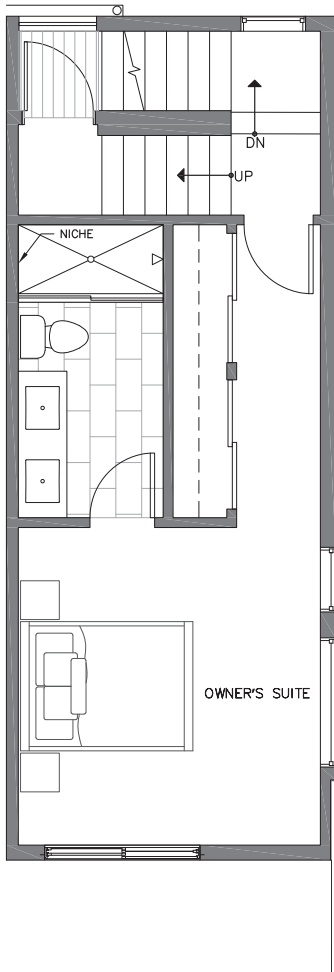


1.75

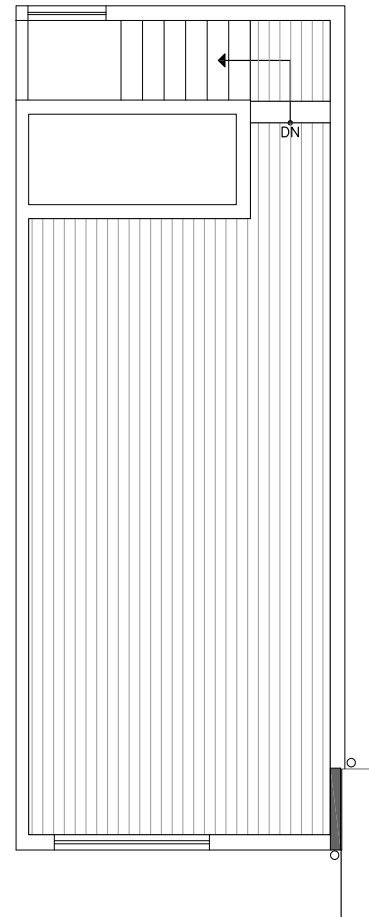


GARAGE

OF
THE GREEN LAKE
Collection



THIRD FLOOR



ROOF DECK



ISOLAHOMES.COM | 206.413.9555 | 13555 SE 36TH ST., SUITE 320, BELLEVUE, WA 98006

Disclaimer: Floor plans and site plans are for illustrative purposes only. In a continuing effort to improve products and designs, final construction elevations, square footages, floor plans and/or materials and colors may vary. Buyer to verify to their own satisfaction.



PID:026