



7219 5TH AVE NE

SEATTLE, WA 98115

OF
THE GREEN LAKE
Collection



1,332



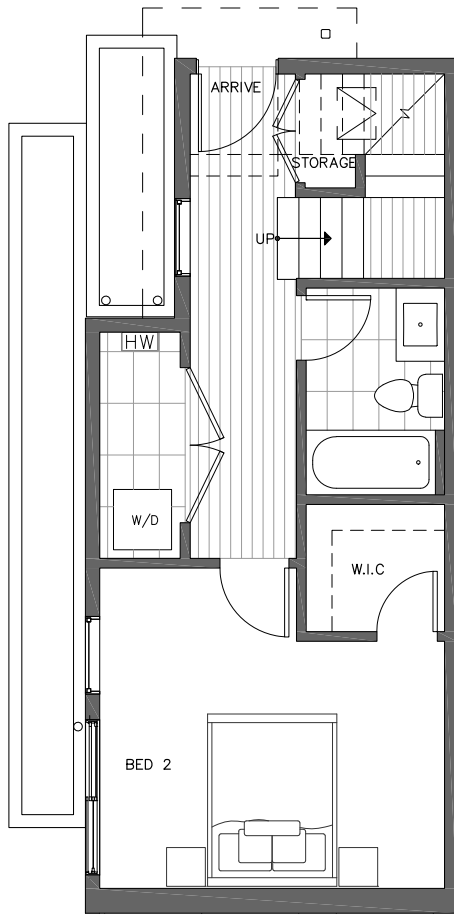
2



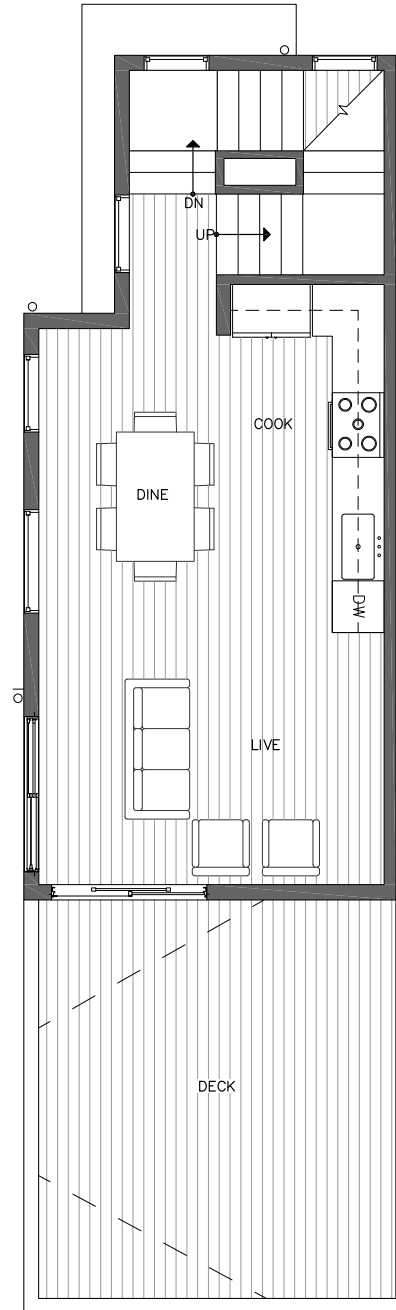
1.75



GARAGE



FIRST FLOOR



SECOND FLOOR



PID:026

ISOLAHOMES.COM | 206.413.9555 | 13555 SE 36TH ST., SUITE 320, BELLEVUE, WA 98006

Disclaimer: Floor plans and site plans are for illustrative purposes only. In a continuing effort to improve products and designs, final construction elevations, square footages, floor plans and/or materials and colors may vary. Buyer to verify to their own satisfaction.





7219 5TH AVE NE

SEATTLE, WA 98115

OF
THE GREEN LAKE
Collection



1,332



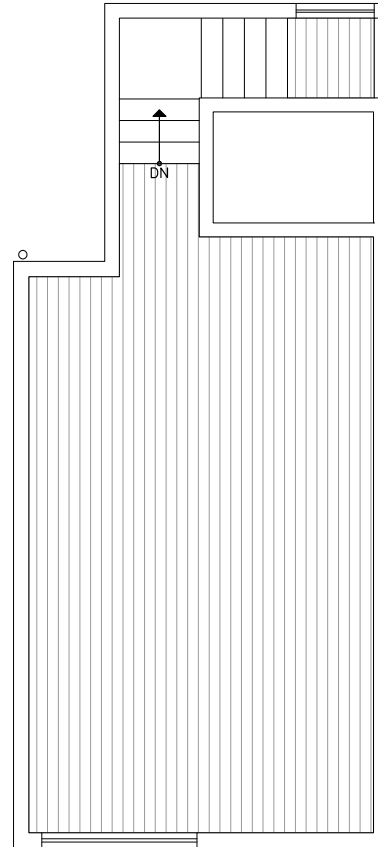
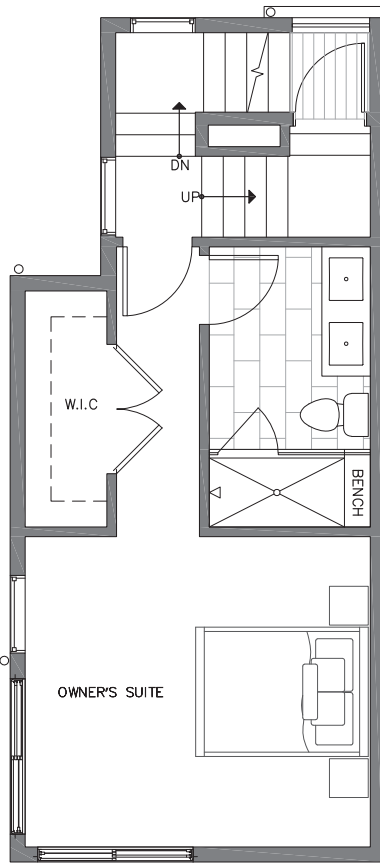
2



1.75



GARAGE



THIRD FLOOR



ROOF DECK

PID:026

ISOLAHOMES.COM | 206.413.9555 | 13555 SE 36TH ST., SUITE 320, BELLEVUE, WA 98006

Disclaimer: Floor plans and site plans are for illustrative purposes only. In a continuing effort to improve products and designs, final construction elevations, square footages, floor plans and/or materials and colors may vary. Buyer to verify to their own satisfaction.

