



# 212F 18TH AVE

SEATTLE, WA 98112



1,320



2

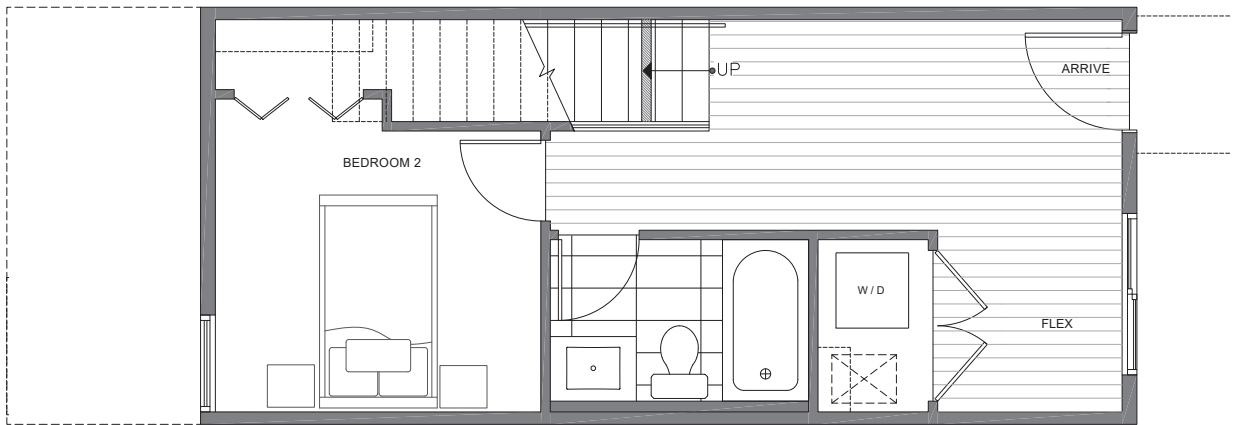


1.75

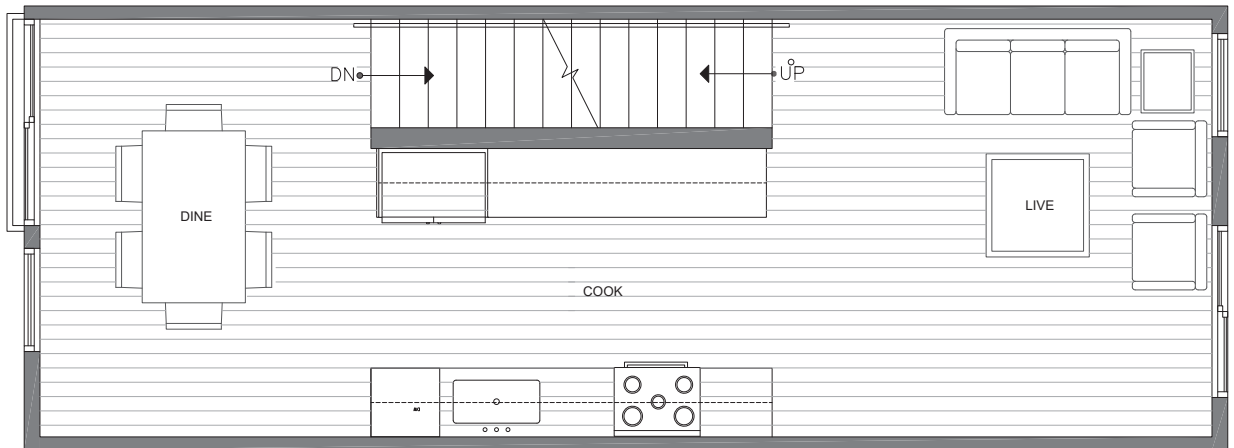


PARKING SPACE

FIRST FLOOR



SECOND FLOOR



PID: 323

ISOLAHOMES.COM | 206.413.9555 | 13555 SE 36TH ST., SUITE 320, BELLEVUE, WA 98006

Disclaimer: Floor plans and site plans are for illustrative purposes only. In a continuing effort to improve products and designs, final construction elevations, square footages, floor plans and/or materials and colors may vary. Buyer to verify to their own satisfaction.





# 212F 18TH AVE

SEATTLE, WA 98112



1,320



2

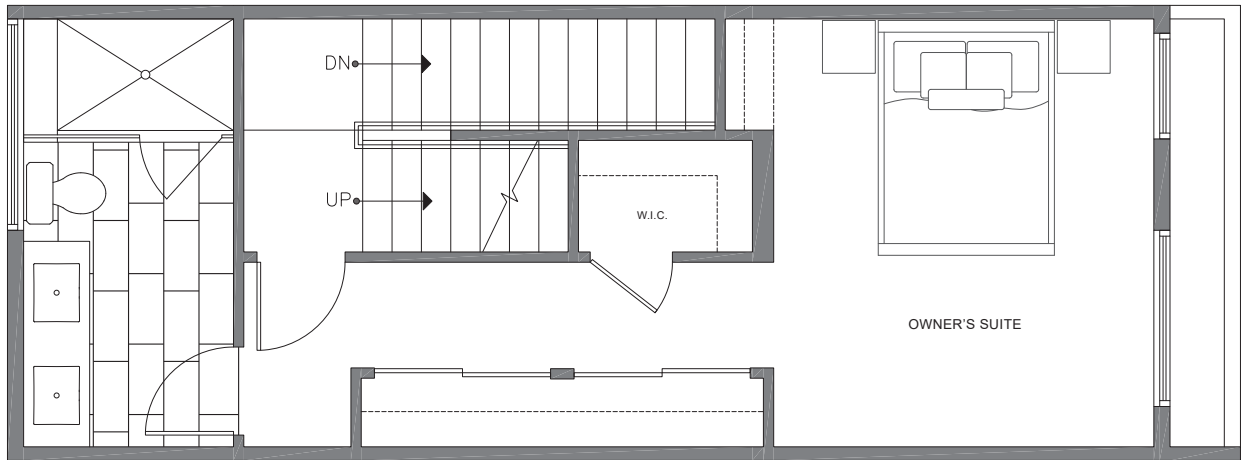


1.75

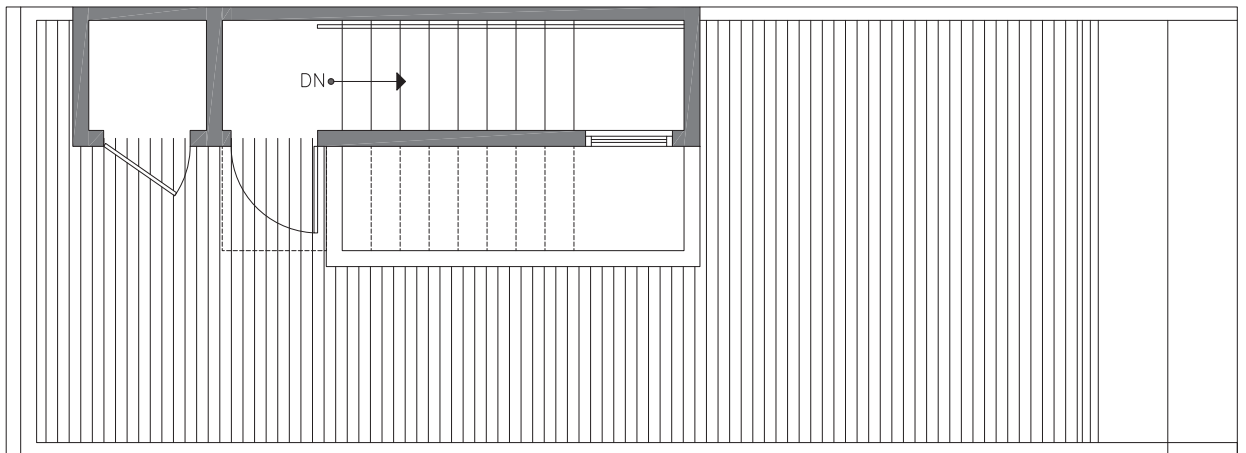


PARKING SPACE

THIRD FLOOR



ROOF DECK



PID: 323

