



# 6539E 4TH AVE NE

SEATTLE, WA 98115



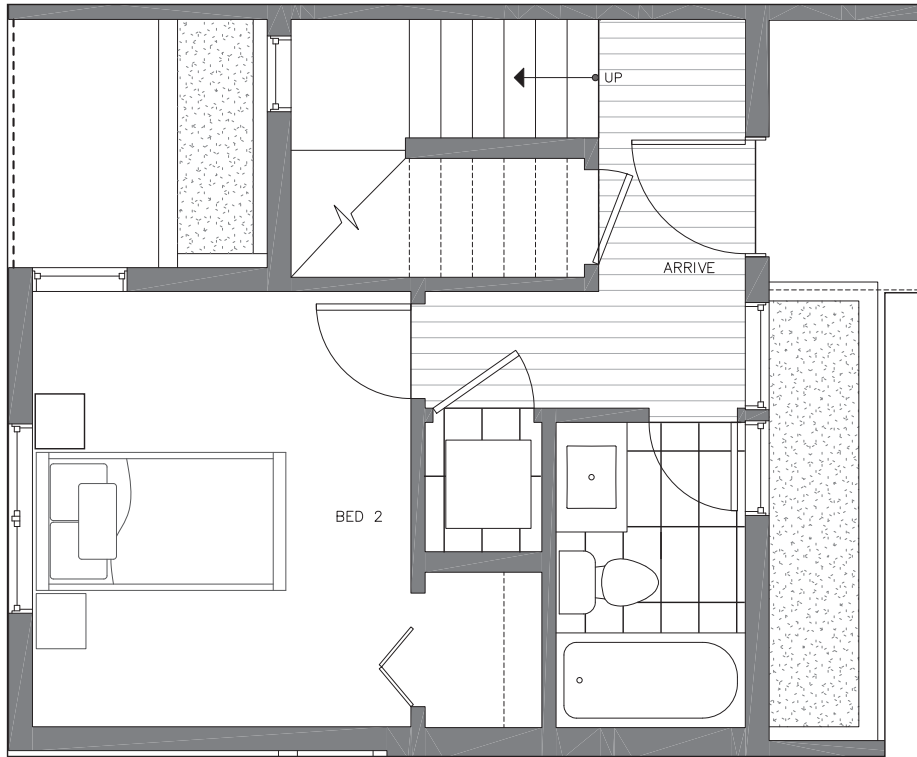
1,022



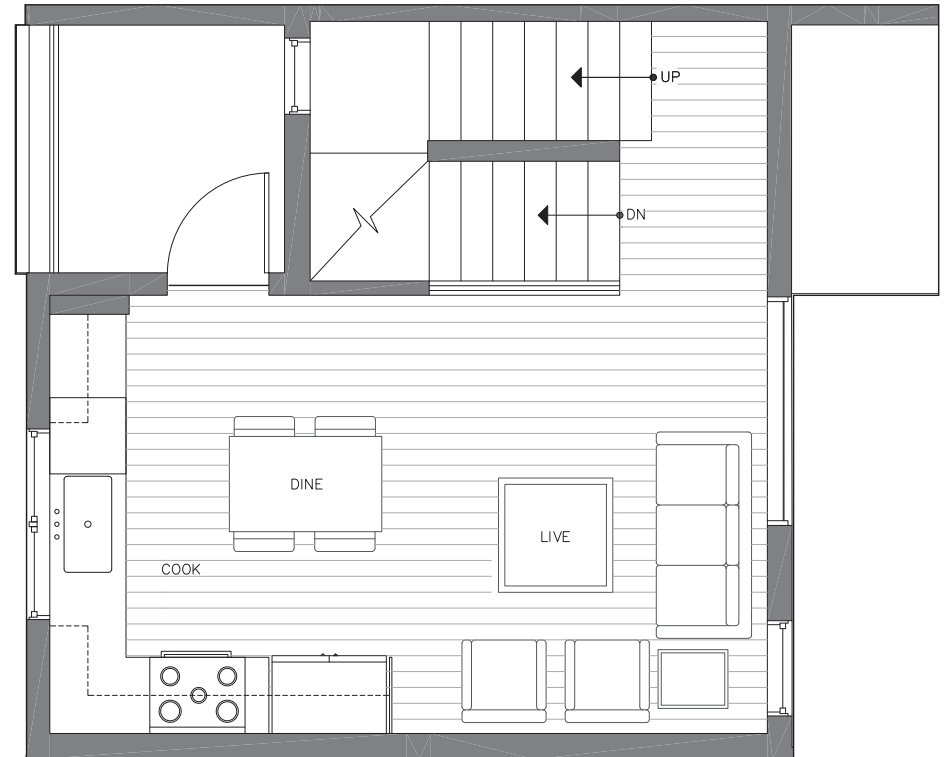
2



1.75



FIRST FLOOR



SECOND FLOOR



PID: 461





# 6539E 4TH AVE NE

SEATTLE, WA 98115



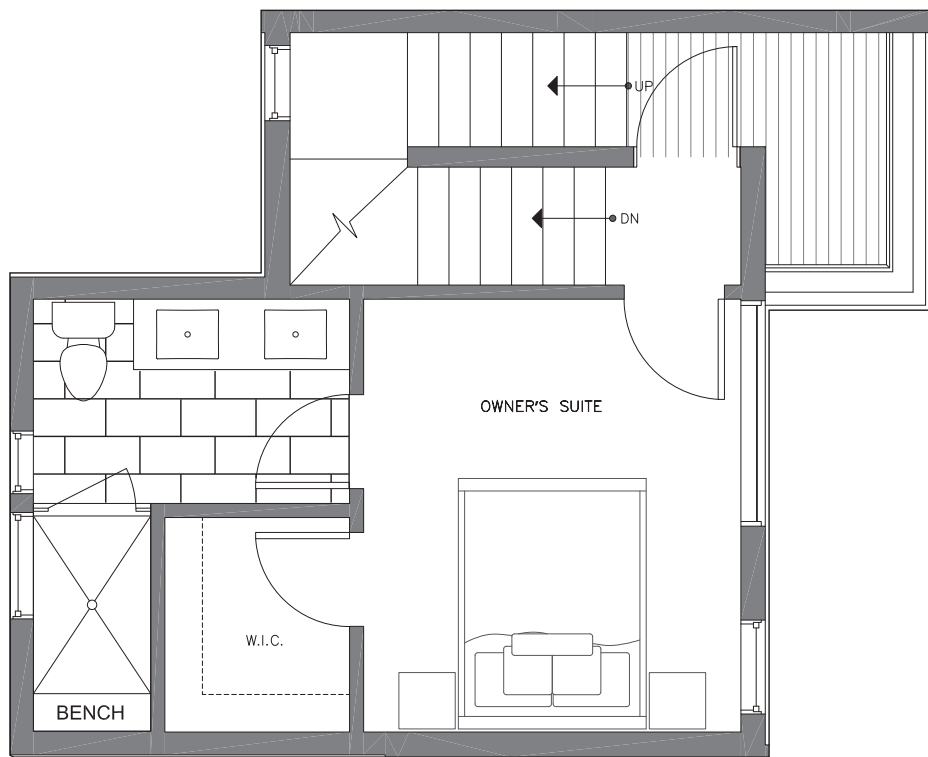
1,022



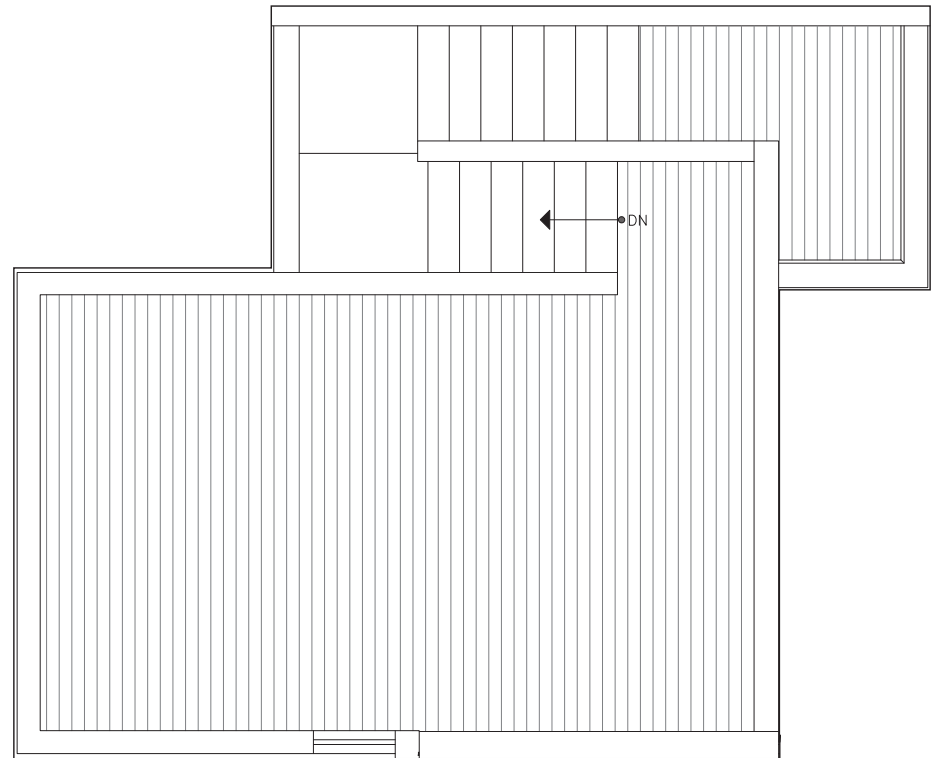
2



1.75



THIRD FLOOR



ROOF DECK



PID: 461

ISOLAHOMES.COM | 206.550.7835 | 13555 SE 36TH ST., SUITE 320, BELLEVUE, WA 98006

Disclaimer: Floor plans and site plans are for illustrative purposes only. In a continuing effort to improve products and designs, final construction elevations, square footages, floor plans and/or materials and colors may vary. Buyer to verify to their own satisfaction.

