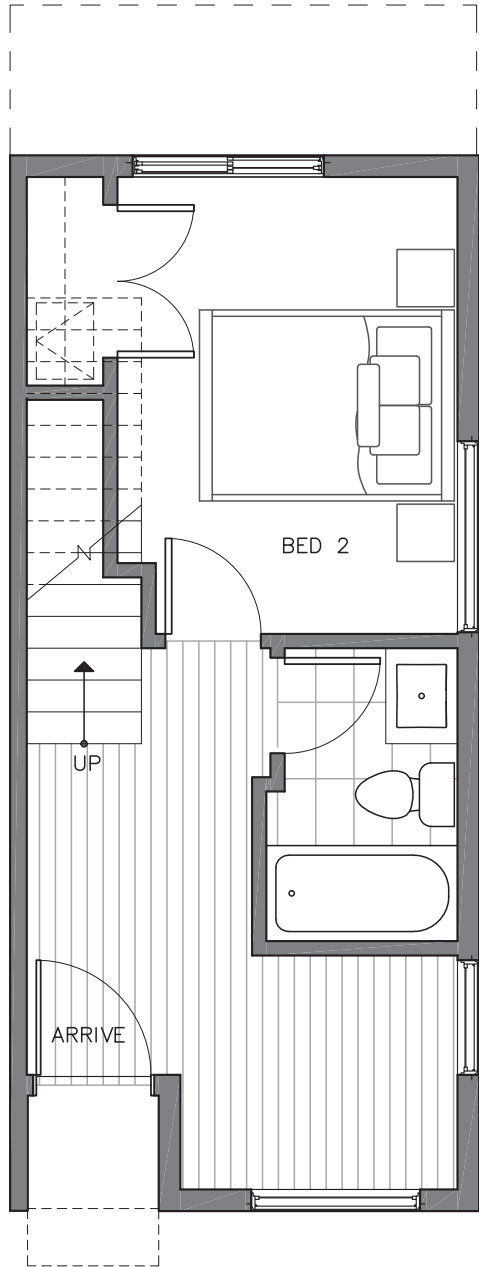


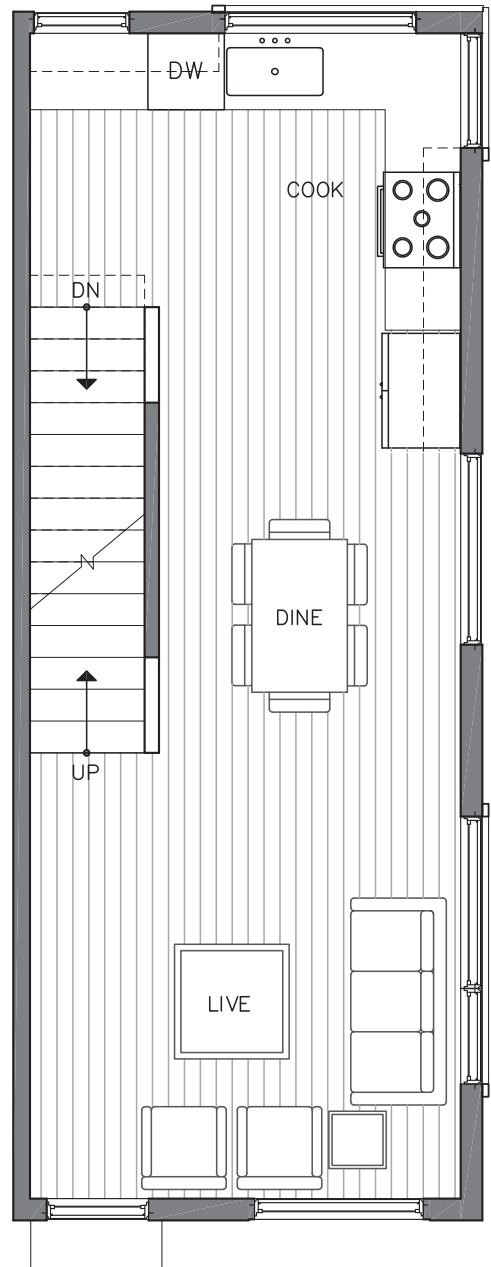


6511 G PHINNEY AVE N

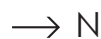
SEATTLE, WA 98103



FIRST FLOOR



SECOND FLOOR



PID: 394

ISOLAHOMES.COM | 206.413.9555 | 13555 SE 36TH ST., SUITE 320, BELLEVUE, WA 98006

Disclaimer: Floor plans and site plans are for illustrative purposes only. In a continuing effort to improve products and designs, final construction elevations, square footages, floor plans and/or materials and colors may vary. Buyer to verify to their own satisfaction.





THE PEAKS at Phinney Ridge

6511 G PHINNEY AVE N

SEATTLE, WA 98103



1,177



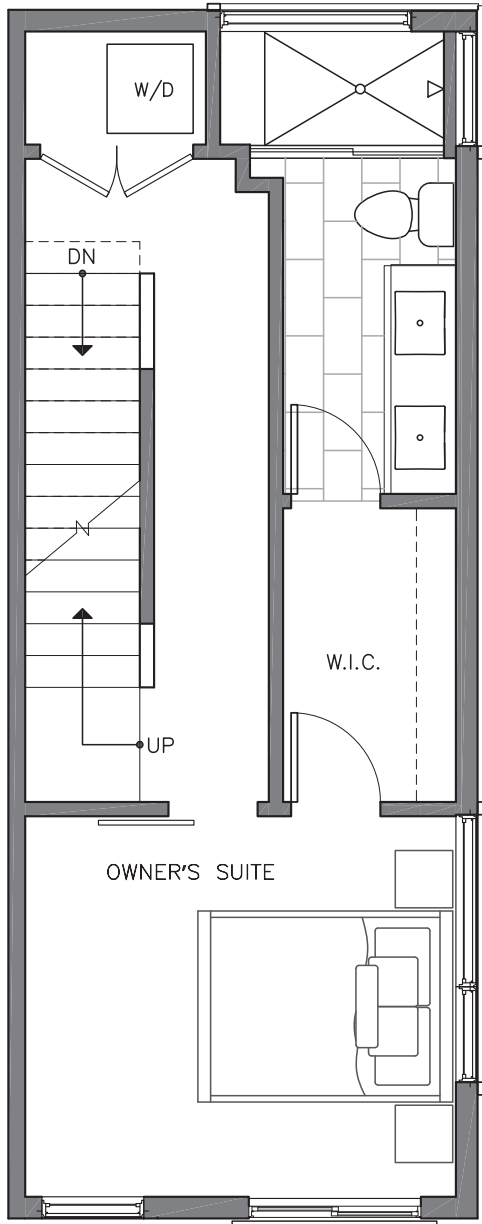
2



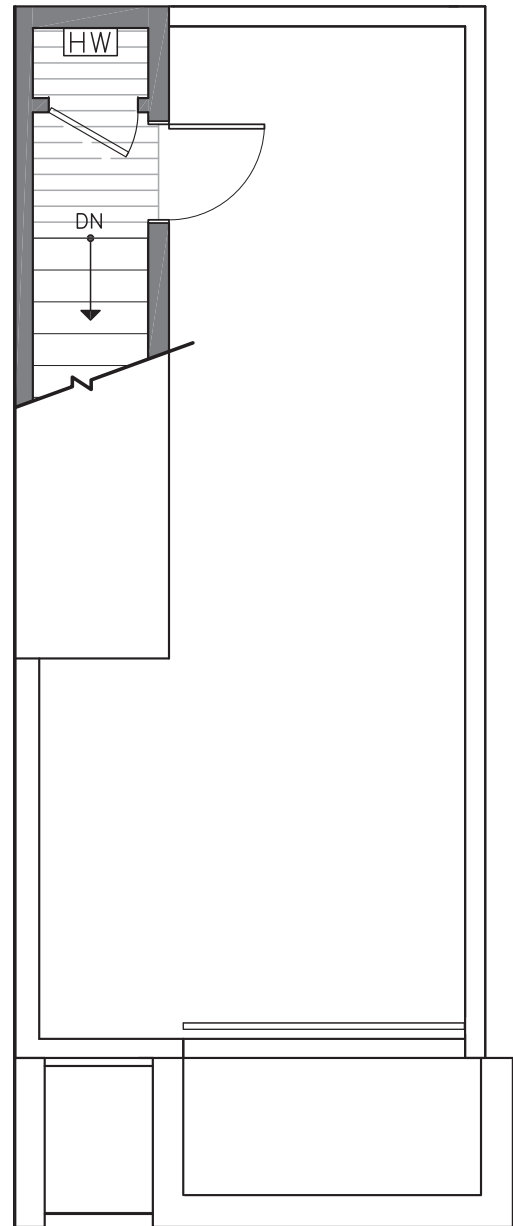
1.75



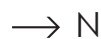
PARKING SPACE



THIRD FLOOR



ROOF DECK



PID: 394

ISOLAHOMES.COM | 206.413.9555 | 13555 SE 36TH ST., SUITE 320, BELLEVUE, WA 98006

Disclaimer: Floor plans and site plans are for illustrative purposes only. In a continuing effort to improve products and designs, final construction elevations, square footages, floor plans and/or materials and colors may vary. Buyer to verify to their own satisfaction.

