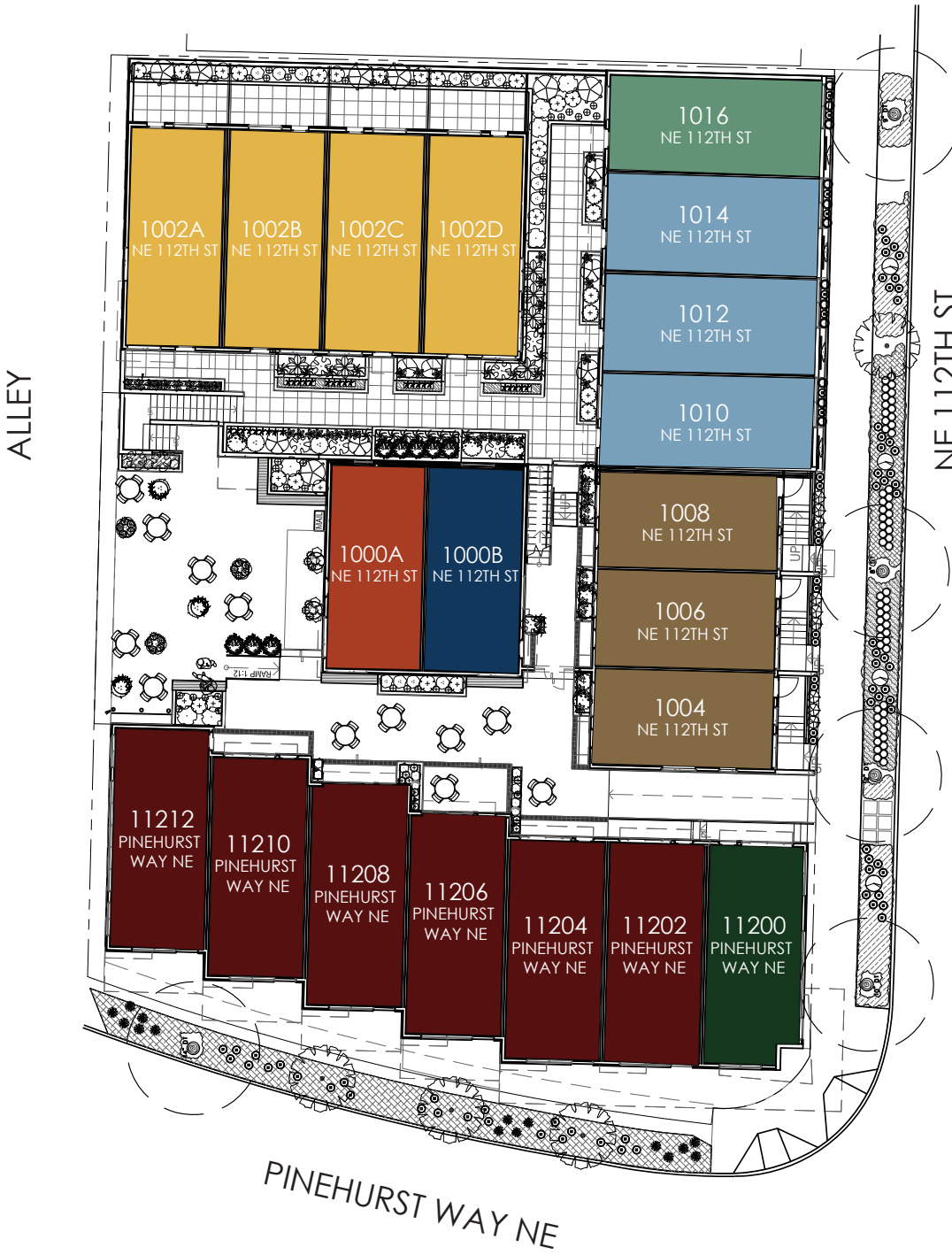




# THE PINES AT NORTHGATE SITE MAP

PINEHURST | 11200 - 11212 E PINEHURST WAY NE + 1000 - 1016 NE 112TH ST, SEATTLE, WA 98125  
 LOCATED AT THE CORNER OF E PINEHURST WAY + NE 112TH ST  
 GROSS SQUARE FOOTAGE RANGES FROM 1,378 - 2,247



## FLOOR PLANS:

### PHASE 1:

- PONDEROSA
- LODGEPOLE

### PHASE 2:

- PINYON
- TORREY
- FOXTAIL

### PHASE 3:

- CEDAR
- MONTEREY
- BRISTLECONE



PID: 020

ISOLAHOMES.COM | 206.818.1966 | 13555 SE 36TH ST., SUITE 320, BELLEVUE, WA 98006

Disclaimer: Floor plans and site plans are for illustrative purposes only. In a continuing effort to improve products and designs, final construction elevations, square footages, floor plans and/or materials and colors may vary. Buyer to verify to their own satisfaction.

