

# Sunstone at Fremont

# 809C N 47TH ST

SEATTLE, WA 98103



1,496



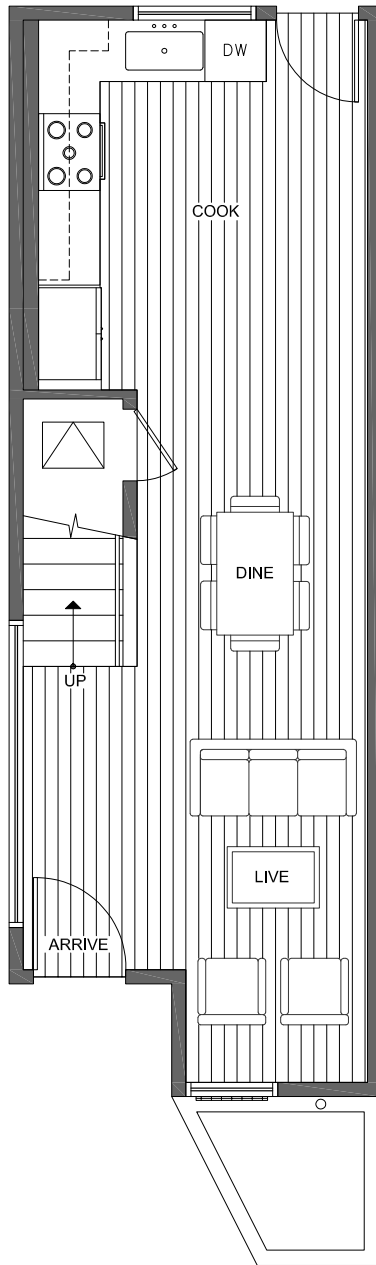
3



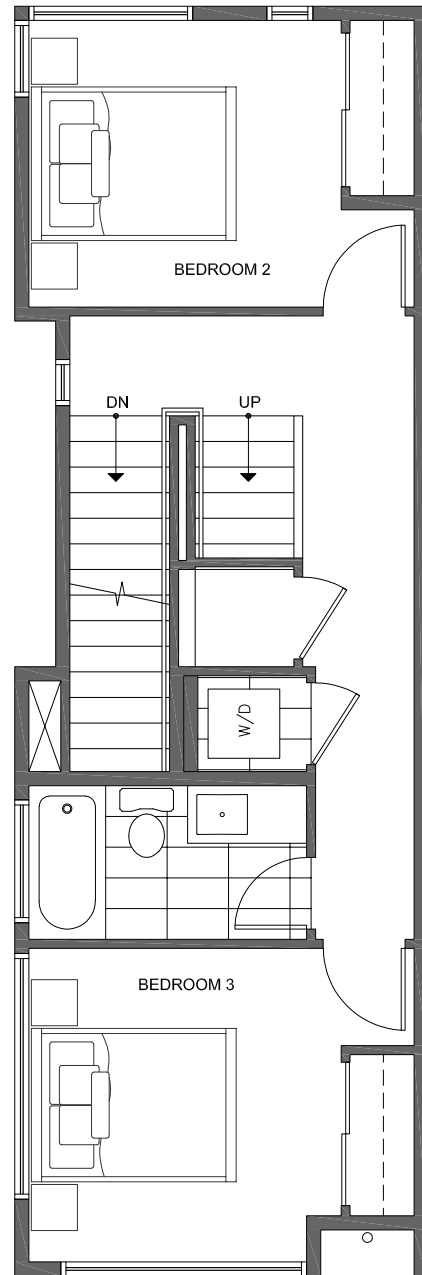
1.75



PARKING  
SPACE



FIRST FLOOR



SECOND FLOOR



PID: 434

ISOLAHOMES.COM | 206.413.9555 | 13555 SE 36TH ST., SUITE 320, BELLEVUE, WA 98006

Disclaimer: Floor plans and site plans are for illustrative purposes only. In a continuing effort to improve products and designs, final construction elevations, square footages, floor plans and/or materials and colors may vary. Buyer to verify to their own satisfaction.

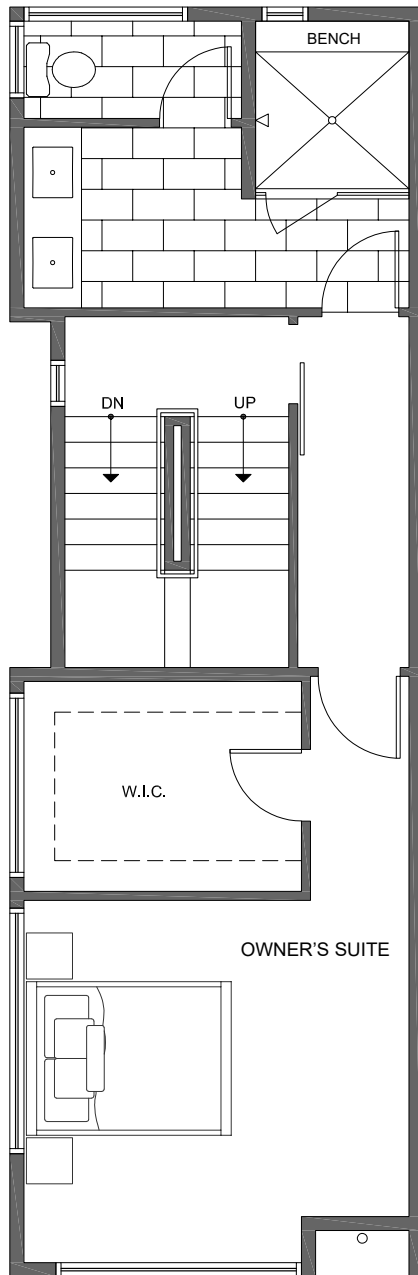


# Sunstone

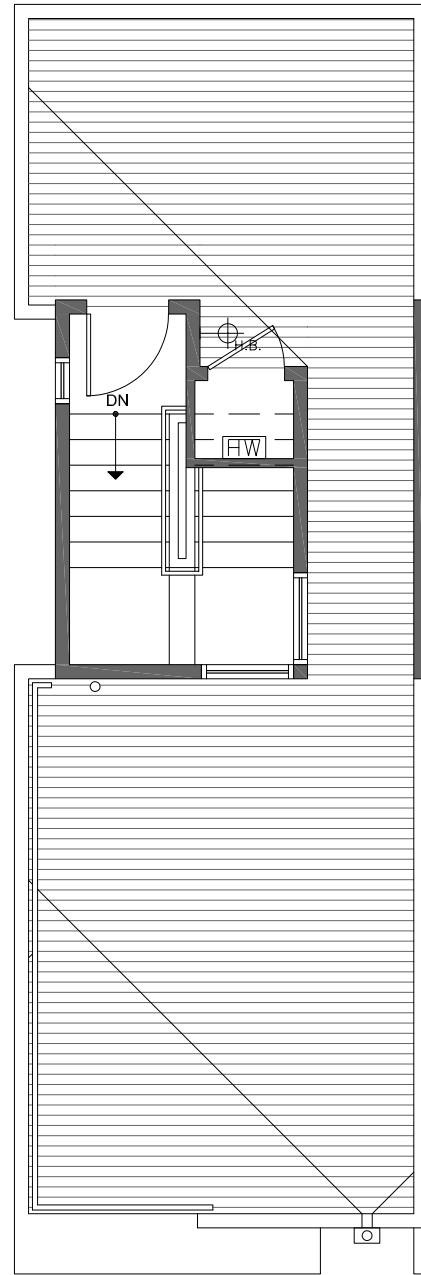
at Fremont

# 809C N 47TH ST

SEATTLE, WA 98103



THIRD FLOOR



ROOF DECK



PID: 434

ISOLAHOMES.COM | 206.413.9555 | 13555 SE 36TH ST., SUITE 320, BELLEVUE, WA 98006

Disclaimer: Floor plans and site plans are for illustrative purposes only. In a continuing effort to improve products and designs, final construction elevations, square footages, floor plans and/or materials and colors may vary. Buyer to verify to their own satisfaction.

